

OVERVIEW

Every three years, select MHCP members conduct a collaborative Community Health Needs Assessment (CHNA). The shared CHNA serves as the foundation from which hospitals and local health departments develop their respective community health improvement strategies. The findings are also intended to inform a broader audience about the top health issues facing their communities. **New in 2024, is the formal addition and partnership with Milwaukee County Department of Health and Human Services and the City of Milwaukee Health Department.**

The 2024 CHNA was supported by local partners, the Center for Urban Population Health (CUPH), and INPOWER.

The CHNA relies on three **main data inputs**:

- Community health online survey (6,265 responses)
- Stakeholder interviews (46) and focus groups (10)
- Data indicators from NEW Health Compass Milwaukee (secondary data)

All of the data for this assessment were collected by the collaborative CHNA work team and analyzed for areas of overlap, frequency, and health impact by CUPH. The team conducted several reviews of key findings and themes to yield the new framework, top health issues, and health factors.



GOALS

- Identify and elevate top health issues and needs through quantitative and qualitative data
- Use data to describe health inequities by presenting disaggregated findings for identified priority populations
- Frame upstream key determinants of health, including racism and discrimination and intersection of housing and health through the concepts of place, space, and economics

HEALTH EQUITY

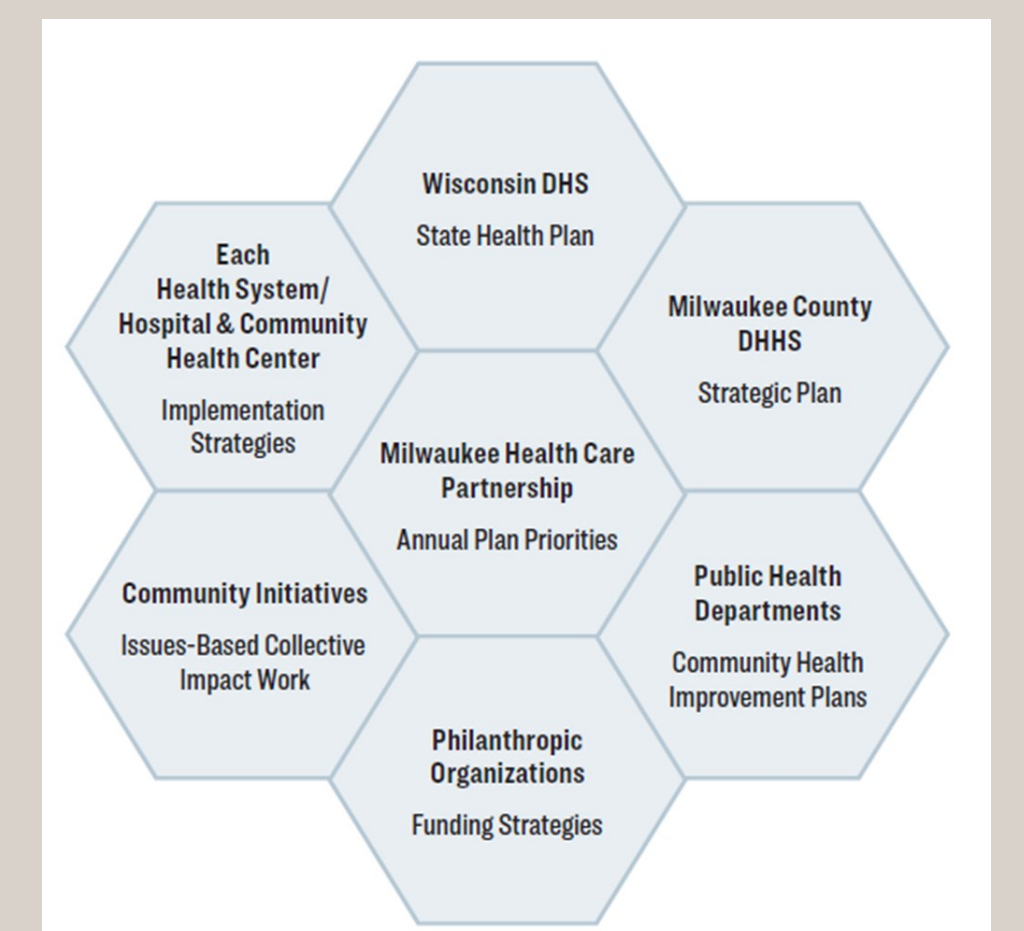
This CHNA is grounded in a broad and comprehensive understanding of population health – taking into consideration that health care accounts for roughly 20% of what contributes to overall health. In reviewing and analyzing the health outcome and health factor data around key determinants, a racial and health equity lens was utilized to reveal and call attention to health disparities and inequities.

Improving health outcomes requires a clear understanding of which populations are being left behind and why they are not achieving the same levels of health and wellness as others. Health equity and health disparities are deeply interconnected, with complex and systemic root causes. With data from the 2024 CHNA, we continue to understand the historical and current connections between racism and discrimination and health outcomes in Milwaukee County.

SPONSOR ORGANIZATIONS

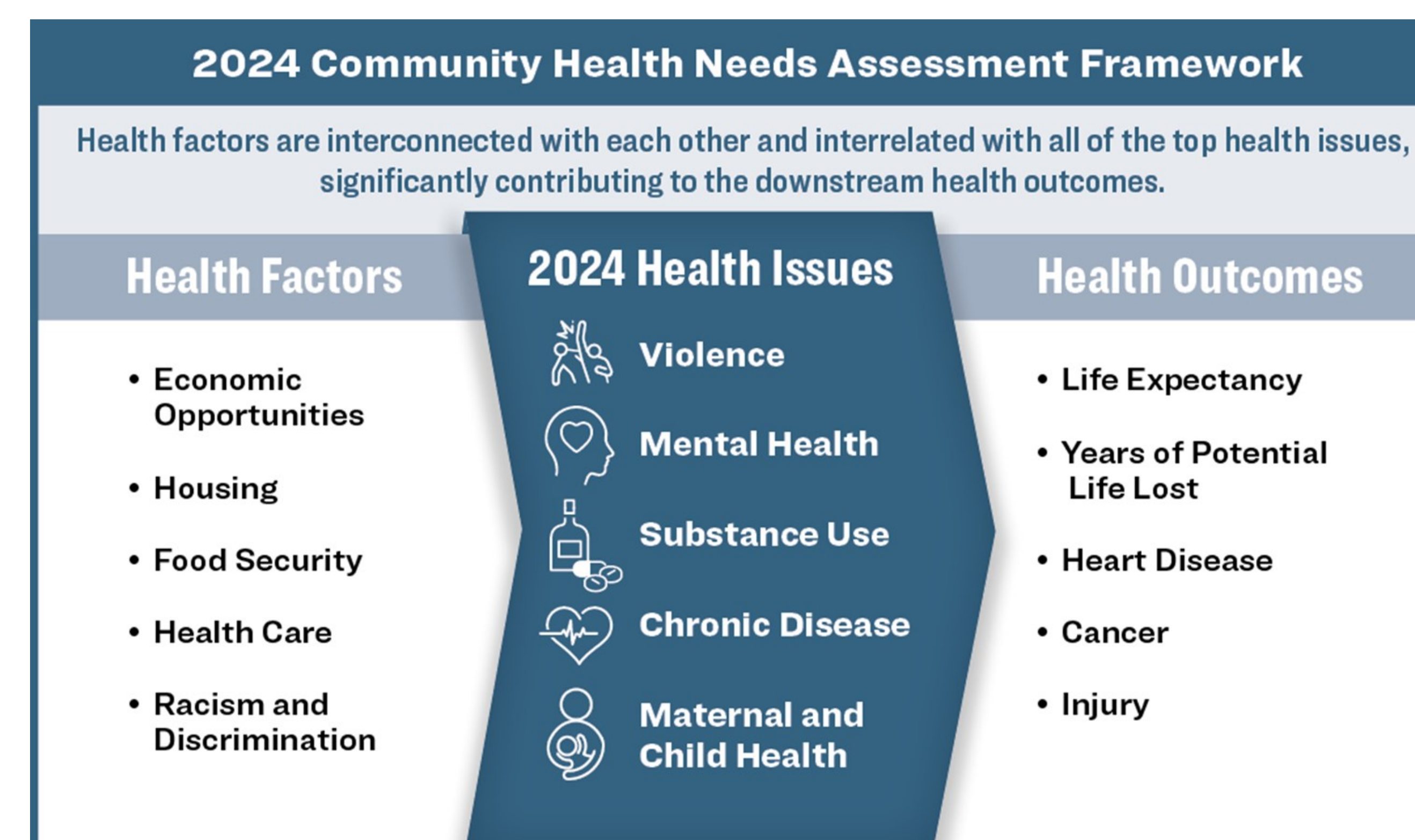
- Aurora Health Care
- Ascension Wisconsin
- Children's Wisconsin
- Froedtert ThedaCare Health
- City of Milwaukee Health Department
- Milwaukee County Department of Health and Human Services

Many additional MHCP members and community partners contributed to and leverage the CHNA.



OUTCOMES / OUTPUTS

Framework and Findings



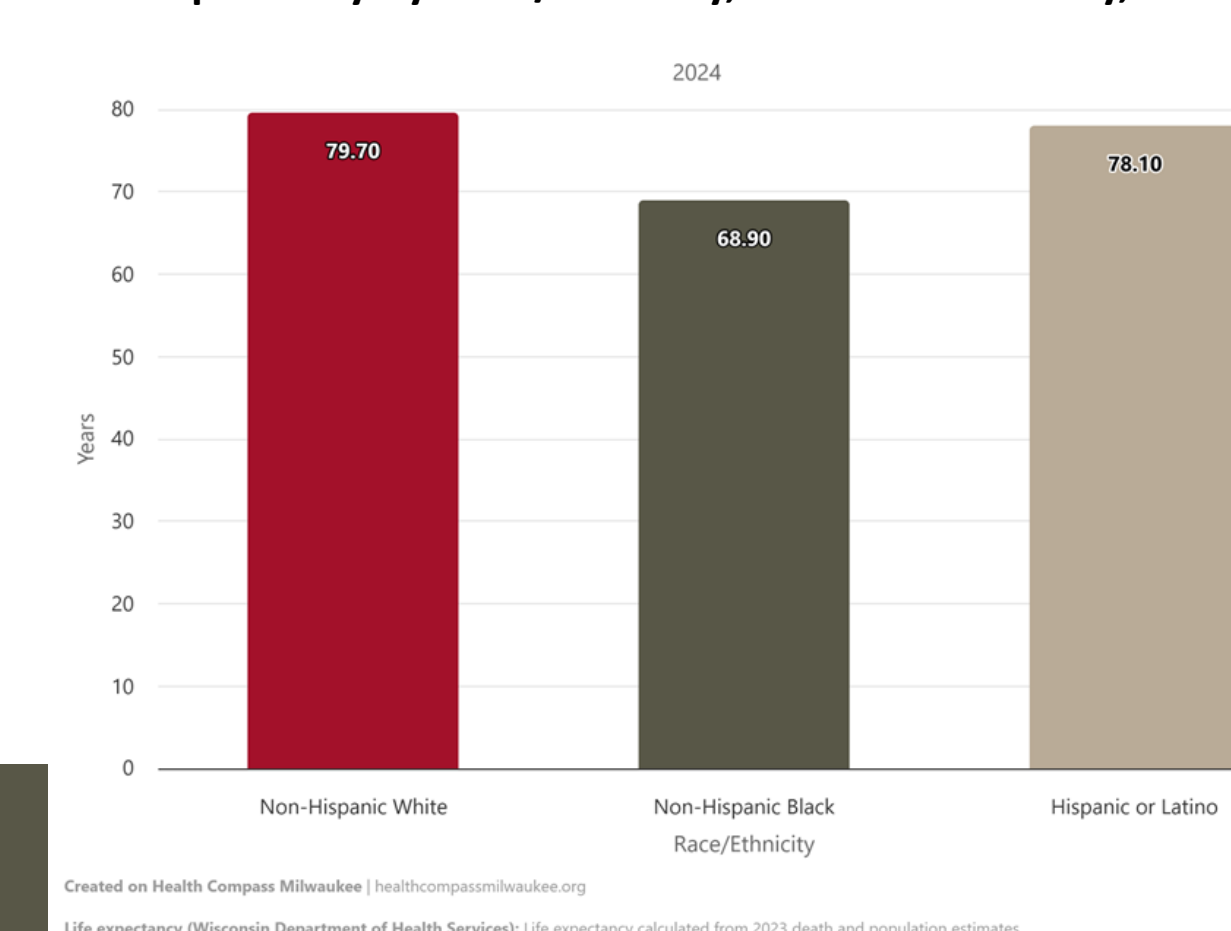
Health Compass Milwaukee Website

Health Compass Milwaukee is a dynamic website providing the **most current health data indicators for Milwaukee County** with mapping, reporting, and analytic tools to support research and planning for community health improvement.

New Digital CHNA

The 2024 Milwaukee County CHNA includes a digital version on Health Compass Milwaukee. The digital version allows users to explore additional CHNA data indicators, segment data, add population or zip code layers, and build data visualizations to your needs!

Life expectancy by Race/Ethnicity, Milwaukee County, 2024



Years of potential life lost, Milwaukee County, 2005-2020

