



# MILWAUKEE HEALTH CARE PARTNERSHIP



Milwaukee County

# Community Health Needs Assessment



2024



MILWAUKEE HEALTH CARE  
PARTNERSHIP

MHCP Showcase  
5-29-2025

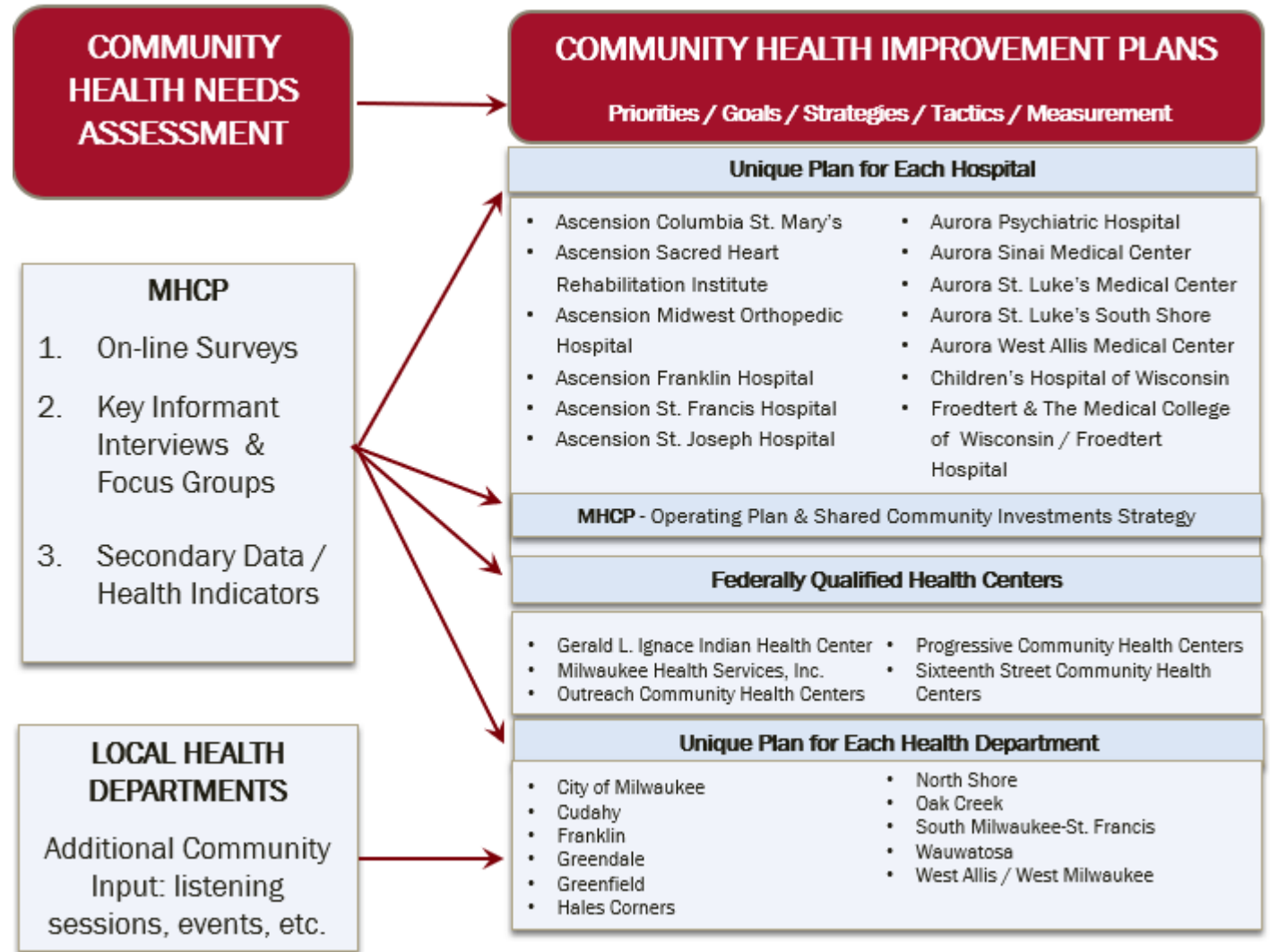
# Sponsor Organizations



# Partner Organizations



# Community Health Improvement Plans



# Data Sources

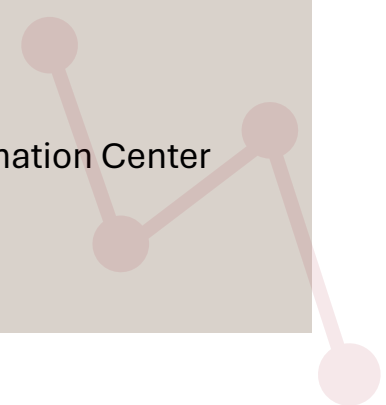


## Primary Data

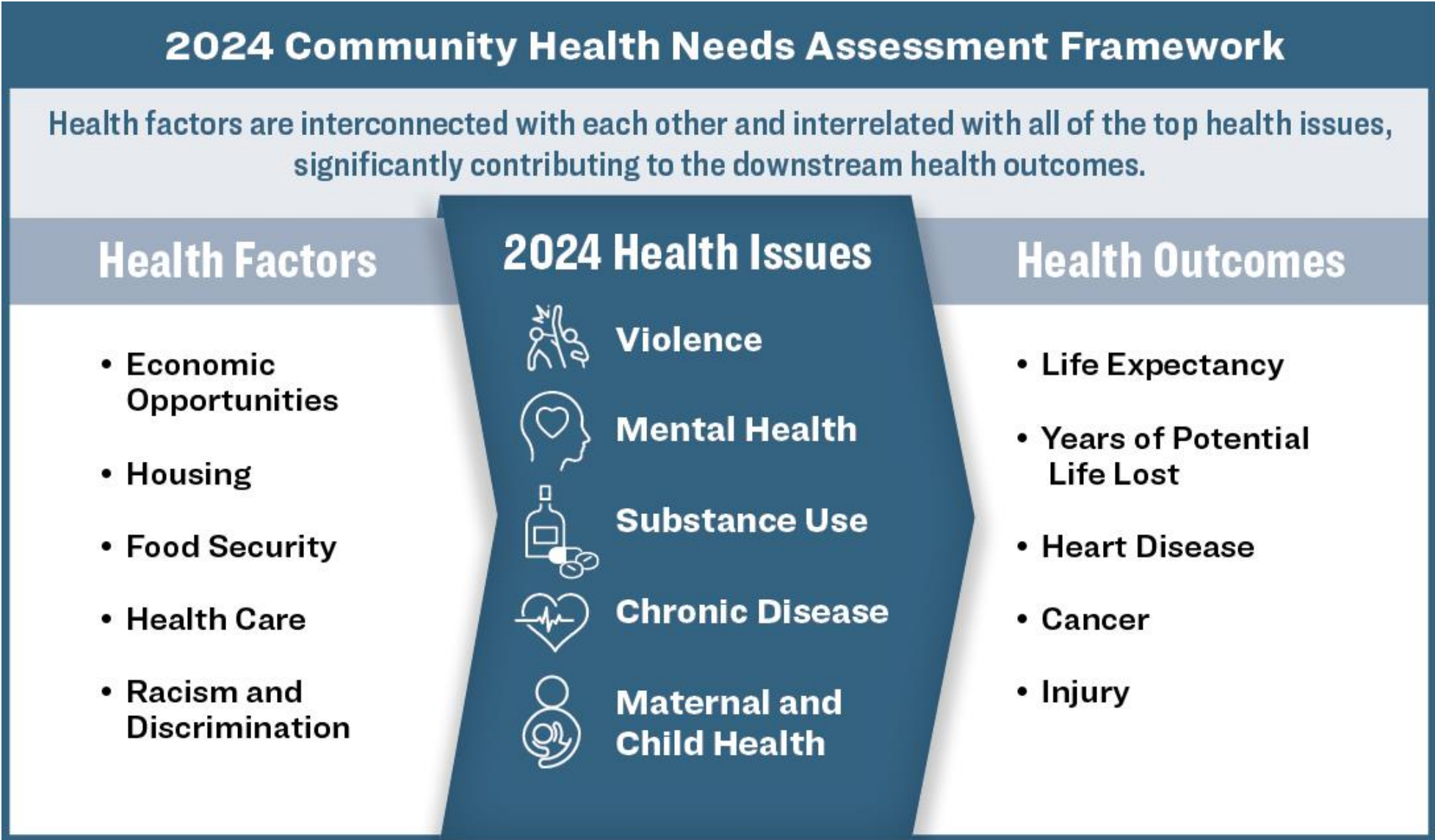
- **Milwaukee County Community Health Survey:** An online survey taken by 6,265 Milwaukee County residents.
- **Key Informant Interview and Focus Groups:** Input from 46 key informants and 10 focus groups.

## Secondary Data

- **Health Compass Milwaukee:** a dynamic data website offering numerous publicly reported health data indicators. Select sources include:
  - BRFSS
  - YRBSS
  - CDC PLACES
  - American Community Survey (ACS)
  - National Vital Statistics
  - County Health Rankings
  - Wisconsin Hospital Association Information Center (WHAIC)



# 2024 Key Findings Framework

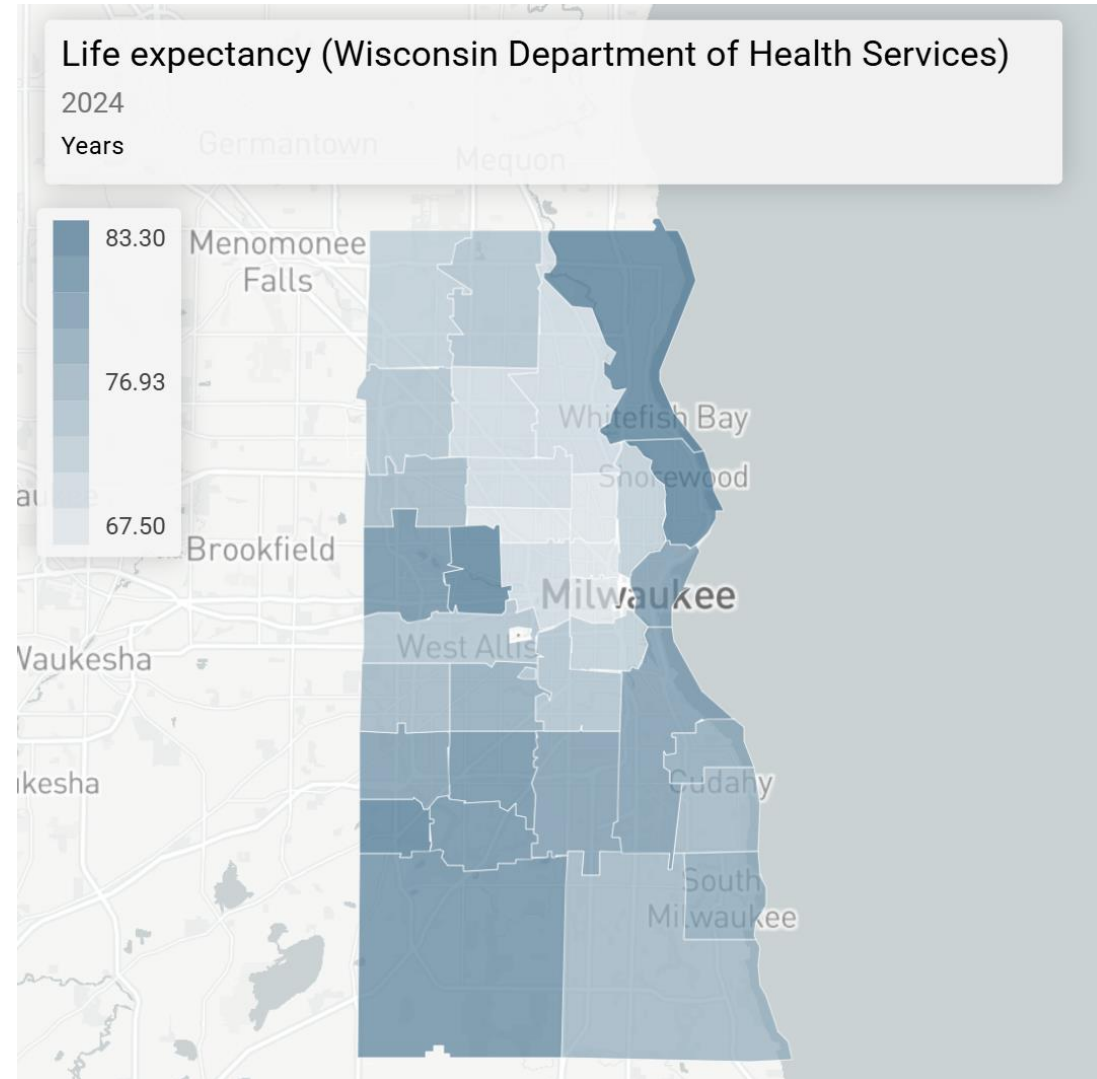


## Health Outcomes

# Life Expectancy

## Life Expectancy, Milwaukee County

- **10-year Life Expectancy gap** between Blacks and Whites (2024)
- ZIP code map of Life Expectancy (LE) highlights areas of high SES having significantly higher LE
- Adjacent or neighboring ZIP codes can have a 10+ years gap: 53211 and 53217 are 83+ years of LE, compared to <73 years of LE in 53209, 53212, 53206



## Health Outcomes

# Violence Mortality

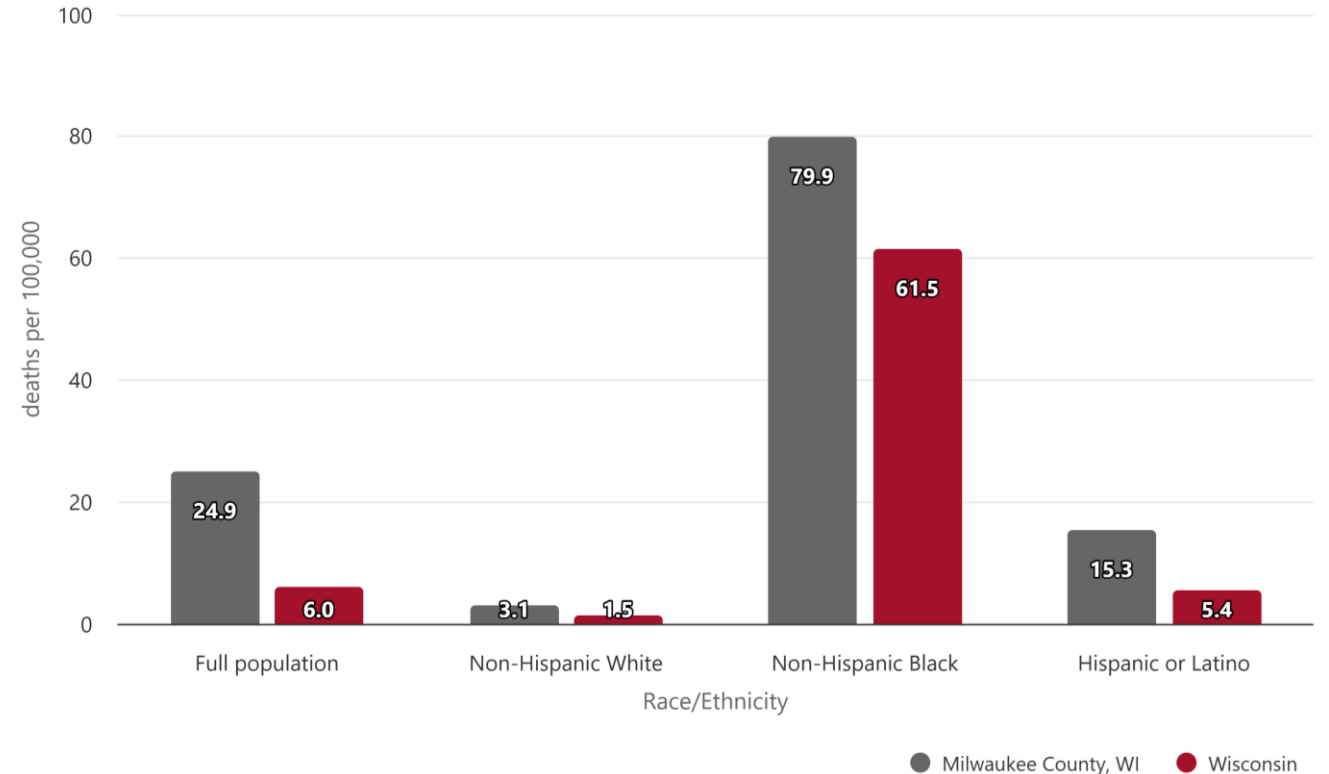
## Homicide Mortality, Milwaukee County

- Deaths per 100,000 residents due to homicide
- **Health Disparity:** Blacks are 25 times, and Latinos are 5 times more likely to die by homicide compared to Whites (Rate of 79.9 and 15.3, to 3.1)

I think gun violence, um, you know, in the, the disparate impact that gun violence had on the community...that a lot of these disparities are affecting communities that are most vulnerable and have traditionally been disenfranchised a lot more than the broader community.

### Homicide mortality by Race/Ethnicity, 2022

Milwaukee County, WI and comparison



Created on Health Compass Milwaukee | [healthcompassmilwaukee.org](http://healthcompassmilwaukee.org) | Data source: National Vital Statistics System-Mortality (NVSS-M) (Via <http://healthindicators.gov>)

Homicide mortality: Deaths per 100,000 residents due to homicide (ICD-10 codes \*U01-\*U02, X85-Y09, Y87.1).

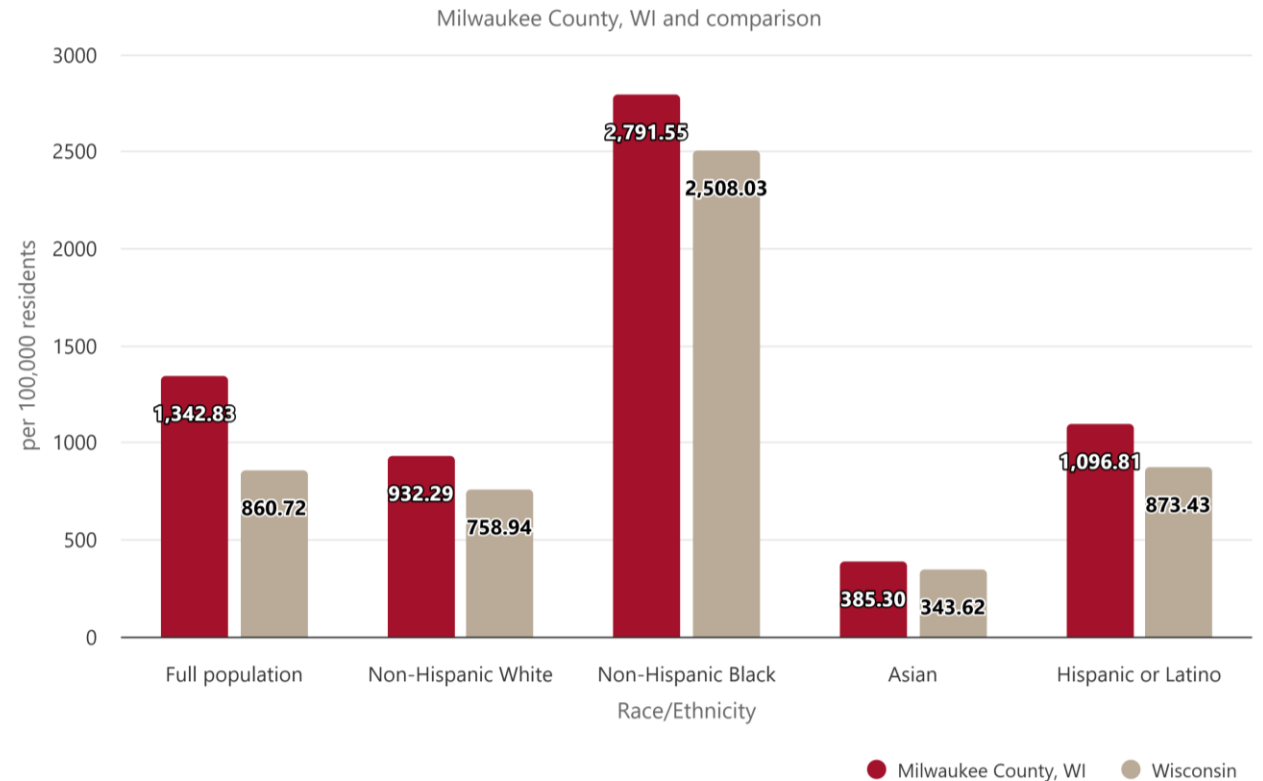
## Top Health Issues

# Mental Health

## Mental Health Emergency Department Rate by Race, Milwaukee County

- Mental health ED rate per 100,000 for illnesses such as depression, anxiety, schizophrenia, bipolar disorder, attention deficit, and eating disorders
- Full population: 1,343 per 100,000
- **Health disparity:** Black rate of 2,791 compared to 932 for Whites

Mental health emergency department visit rate by Race/Ethnicity, 2019-2023



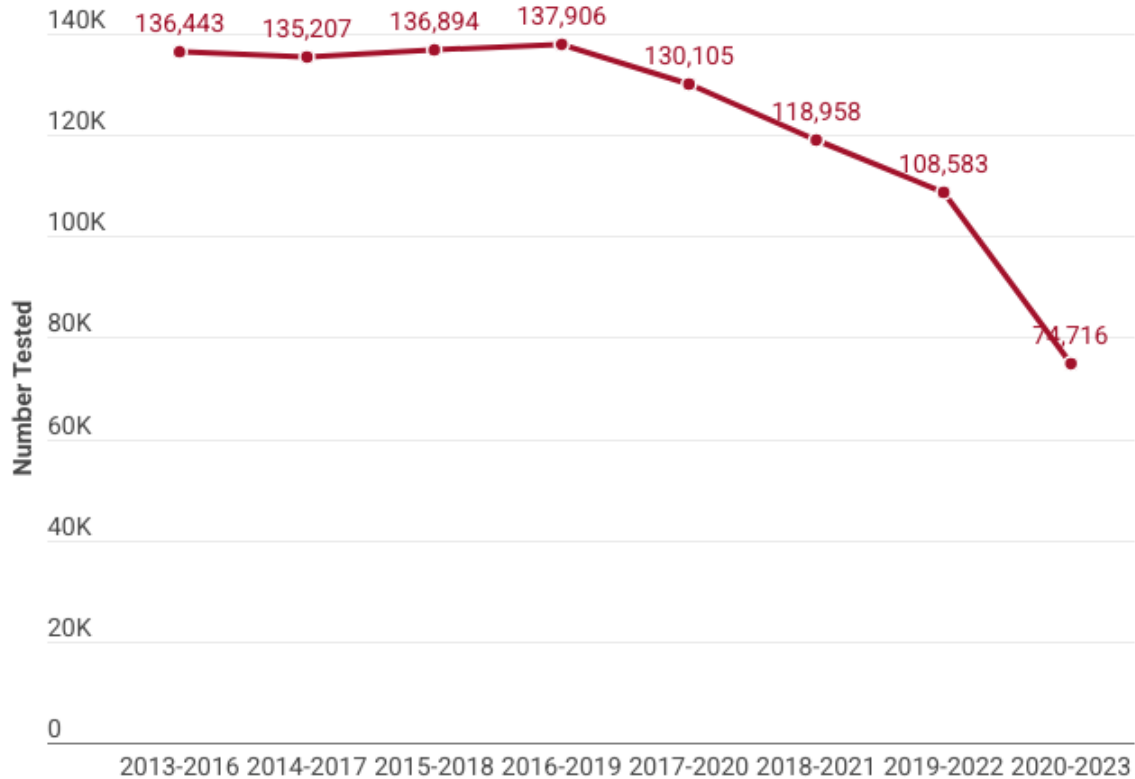
Created on Health Compass Milwaukee | healthcompassmilwaukee.org | Data source: Wisconsin Health Association Information Center (WHAIC) (Calculated by Metopio)

**Mental health emergency department visit rate:** Annual emergency department visits for mental health per 100,000 residents. Mental health includes illnesses such as depression, anxiety, schizophrenia, bipolar disorder, attention deficit, and eating disorders. Does not include alcohol or substance abuse disorders. Risk-adjusted by age and sex. All hospital providers, all payers, based on patient residence.

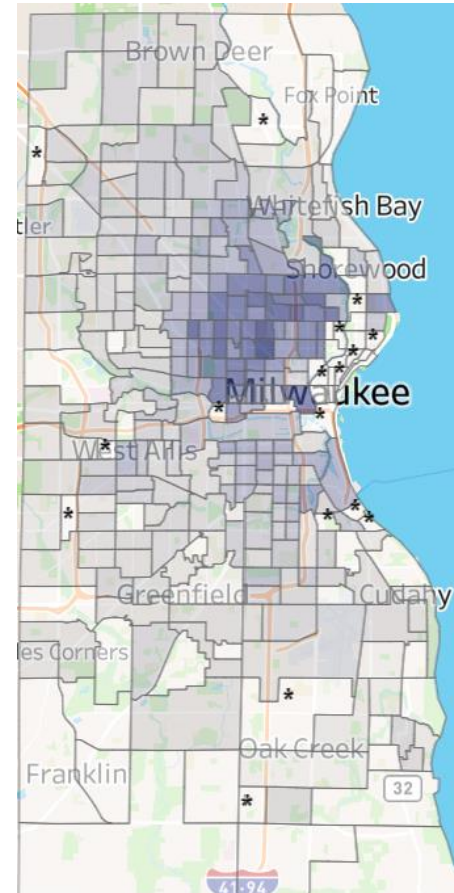
## Top Health Issues

# Maternal and Child Health (MCH)

### Number of Children Tested for Lead Poisoning, Milwaukee County, 2013-2023



### Percent of children with lead poisoning, BLL $\geq 5\mu\text{g}/\text{dL}$ , Milwaukee County, 2020-2023



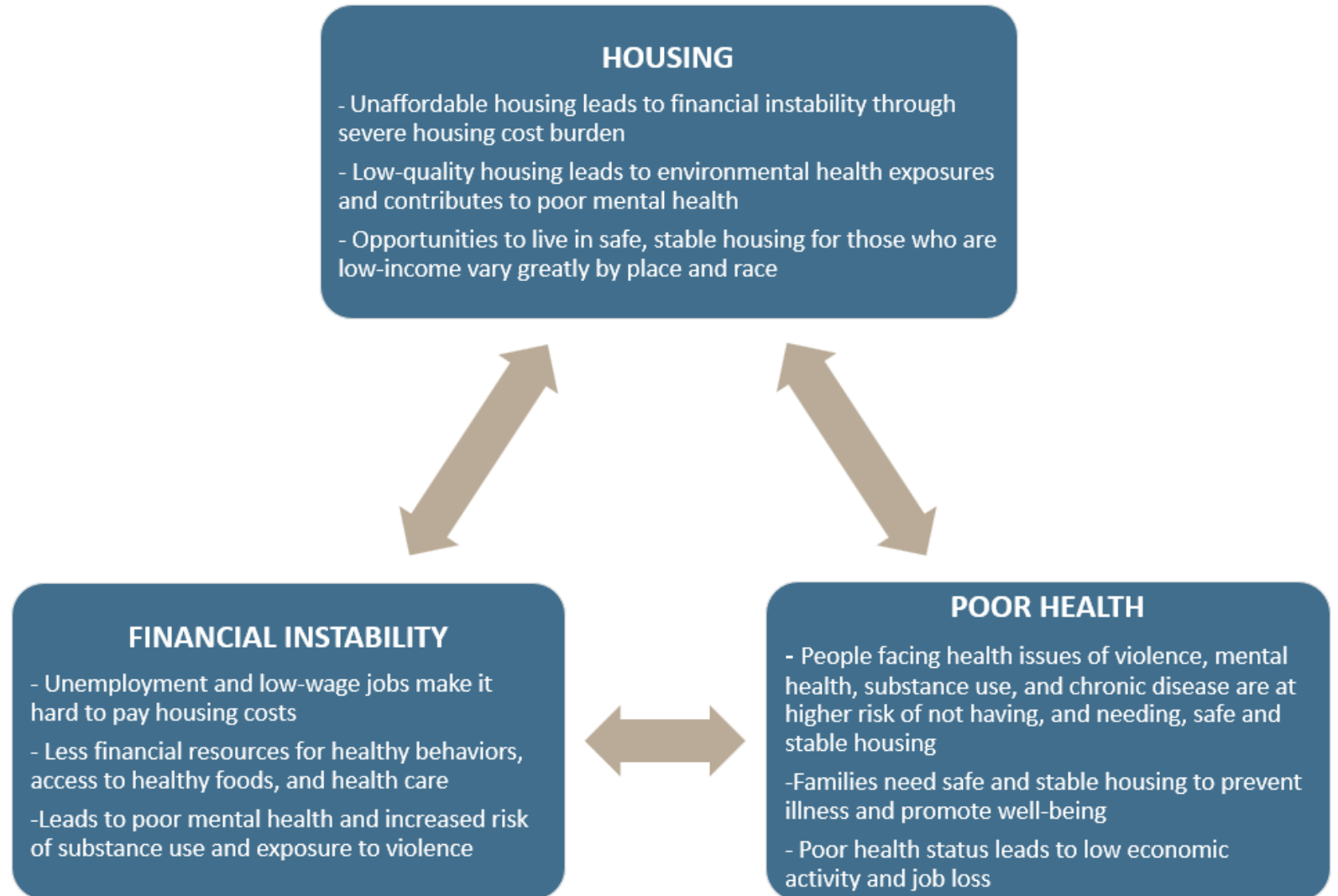
Note: the percent of children poisoning is out of the number of children tested, not the total number of children in the census tract

## Health Factors

# Housing

## Housing and Health

- Vicious cycle between poor health, unaffordable and unsafe housing, and financial instability
- Poor health outcomes across the top health issues greatly impact individuals and families who live at the precarious intersection of poor housing conditions and financial instability



## Health Factors

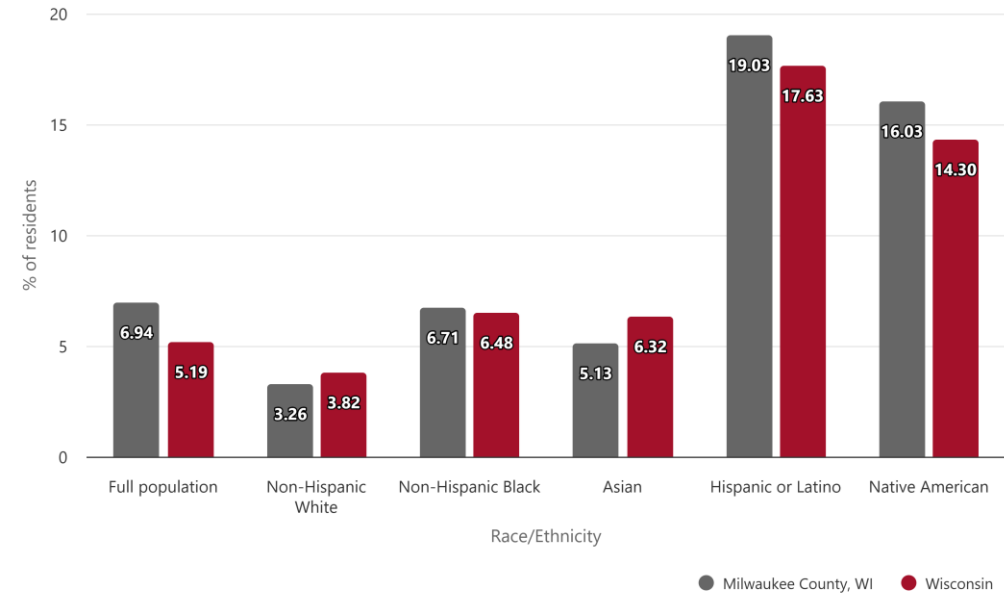
# Health Care Access

## Uninsured Rate, Milwaukee County

- Health care access is multifaceted and directly connects to all the top health issues.
- Broadly define access to health care as the availability, accessibility, acceptability, and connection to care.
- Amongst interviewees, oral health care was discussed, as the link between dental health and chronic illnesses and infection is recognized.
- Milwaukee has made progress in reducing the uninsured rate by increasing Medicaid BadgerCare Plus and Marketplace HealthCare.gov enrollments.
- Uninsured rate is at its lowest in recent times at 8.6% but still higher than state (5.3%) and national (7.12%) rates.
- **Health Disparity:** Hispanic/Latino residents and Native American residents are four times more likely to be uninsured when compared to White and Black residents

Uninsured rate by Race/Ethnicity, 2022

Milwaukee County, WI and comparison

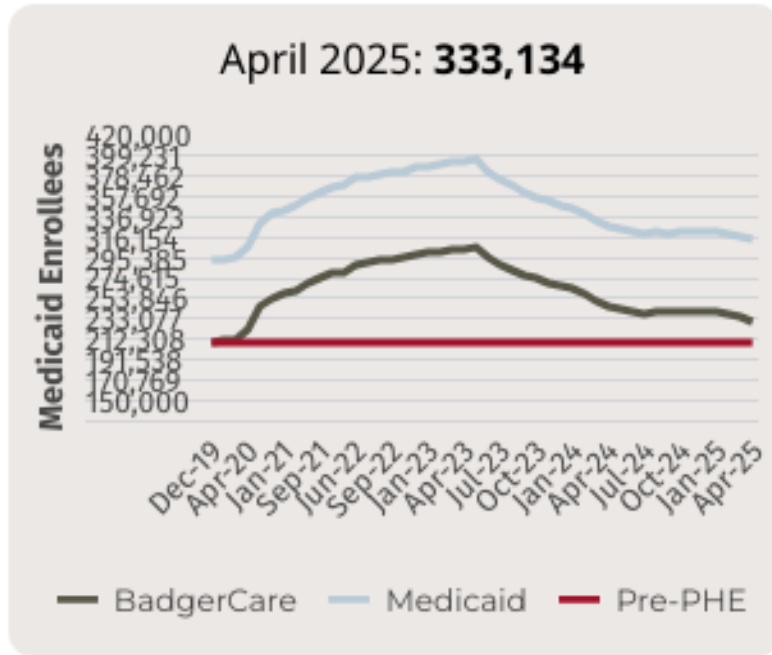


Created on Health Compass Milwaukee | [healthcompassmilwaukee.org](https://healthcompassmilwaukee.org) | Data source: American Community Survey (ACS) (Tables B27001/C27001)

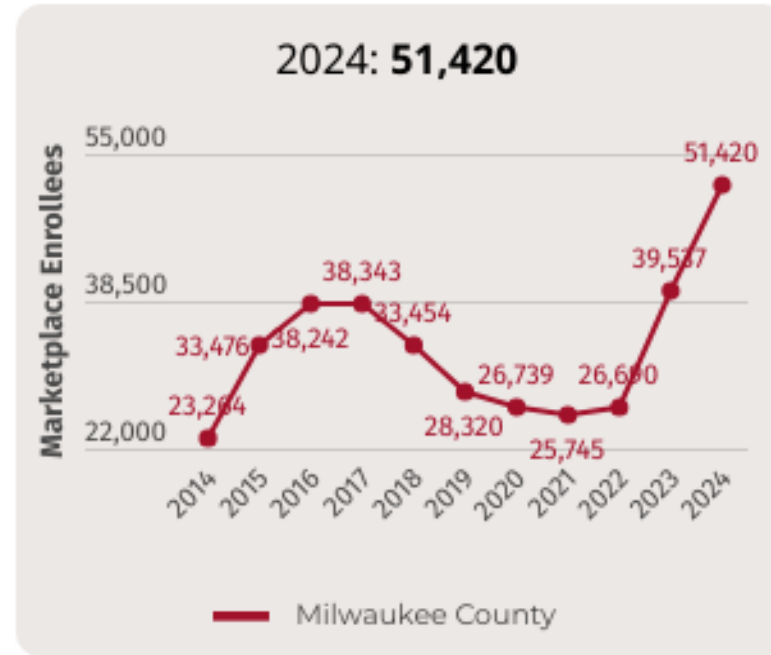
Uninsured rate: Percent of residents without health insurance (at the time of the survey).

# Medicaid & Marketplace Data Updates

Medicaid Enrollees Milwaukee County



Marketplace Enrollees Milwaukee County



# Health Compass Milwaukee's NEW Digital CHNA



**HEALTH COMPASS**  
MILWAUKEE

Visit Health Compass  
Milwaukee Today!



healthcompassmilwaukee.org

## Top Health Issues

The 2024 Milwaukee County CHNA comprehensively combines data collected through the Milwaukee community health survey, interviews with key leaders and community members, focus groups, and various health indicators found on Health Compass Milwaukee. New in 2024, we have developed a framework based on the 2024 findings demonstrating the relationship between community-identified key health issues, the factors that drive them, and the resulting health outcomes seen in the data. The top five health issues identified in this CHNA are:



### Violence

Violence, both interpersonal and structural, significantly harms the health, safety, and well-being of Milwaukee residents and rose to the top of the health issues in 2024. It was closely associated with other top health issues of mental health and substance use in the interviews and focus groups.

[LEARN MORE](#)



### Mental Health

Mental health is defined by the Centers for Disease Control and Prevention (CDC) as a person's emotional, psychological, and social well-being. This includes experiencing depression, anxiety, trauma, and other clinically diagnosed conditions.

[LEARN MORE](#)



### Substance use

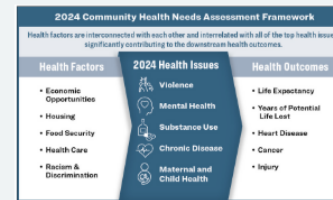
Substance use encompasses the consumption of substances that alter physical or mental states, including legal substances like alcohol and tobacco, illegal drugs, and even misused prescription medications.

[LEARN MORE](#)



### Chronic Disease

## Framework



## Key Health Factors

The 2024 Milwaukee County CHNA elevates numerous health factors that directly influence all the top health issues. They are interconnected among themselves and interrelated with the top health issues. Ultimately, they significantly contribute to the downstream health outcomes, disparities and inequities we see in the community.

- Economic Opportunities
- Housing
- Food Security
- Health Care Access
- Racism and Discrimination

2024 Milwaukee County Community Health Needs Assessment

# Health System Leadership Panel

MILWAUKEE HEALTH CARE  

---

**PARTNERSHIP**

**Moderator:** Ann Christiansen, Executive Director, Milwaukee Health Care Partnership

## Panelists:

- **Bryce Gartland**, MD, South Region President, Froedtert ThedaCare Health
- **Daniel Jackson**, FACHE, Ministry Market Executive, Ascension Wisconsin, and Senior Vice President, Ascension
- **Gil Peri**, MPH, MBA, President and CEO, Children's Wisconsin
- **Jennifer Schomburg**, President, Aurora St. Luke's Medical Center and President, Southeast Wisconsin Area, Aurora Health Care



MILWAUKEE HEALTH CARE PARTNERSHIP

