

# Housing is Health Program

## OVERVIEW

In 2019, MHCP launched the Housing is Health Program for homeless and vulnerably housed patients receiving care at Milwaukee-area health systems and safety-net clinics.

MHCP member hospitals and clinics screen and refer patients in need to the IMPACT Coordinated Entry System who either further refers to Milwaukee County Housing Services (MCHS) if eligible or leverages their social workers/ navigators to help patients secure temporary housing, provide case management, and aid in their ultimate transition to permanent housing stability.

Navigators also provide patients with a variety of support services including, benefits, counselling, mental health and AODA treatment, tenancy education, temporary housing subsidies, and employment counseling. Navigators work with each patient from the time of referral until the individual is considered 'housing stable,' a process which can extend over many months.

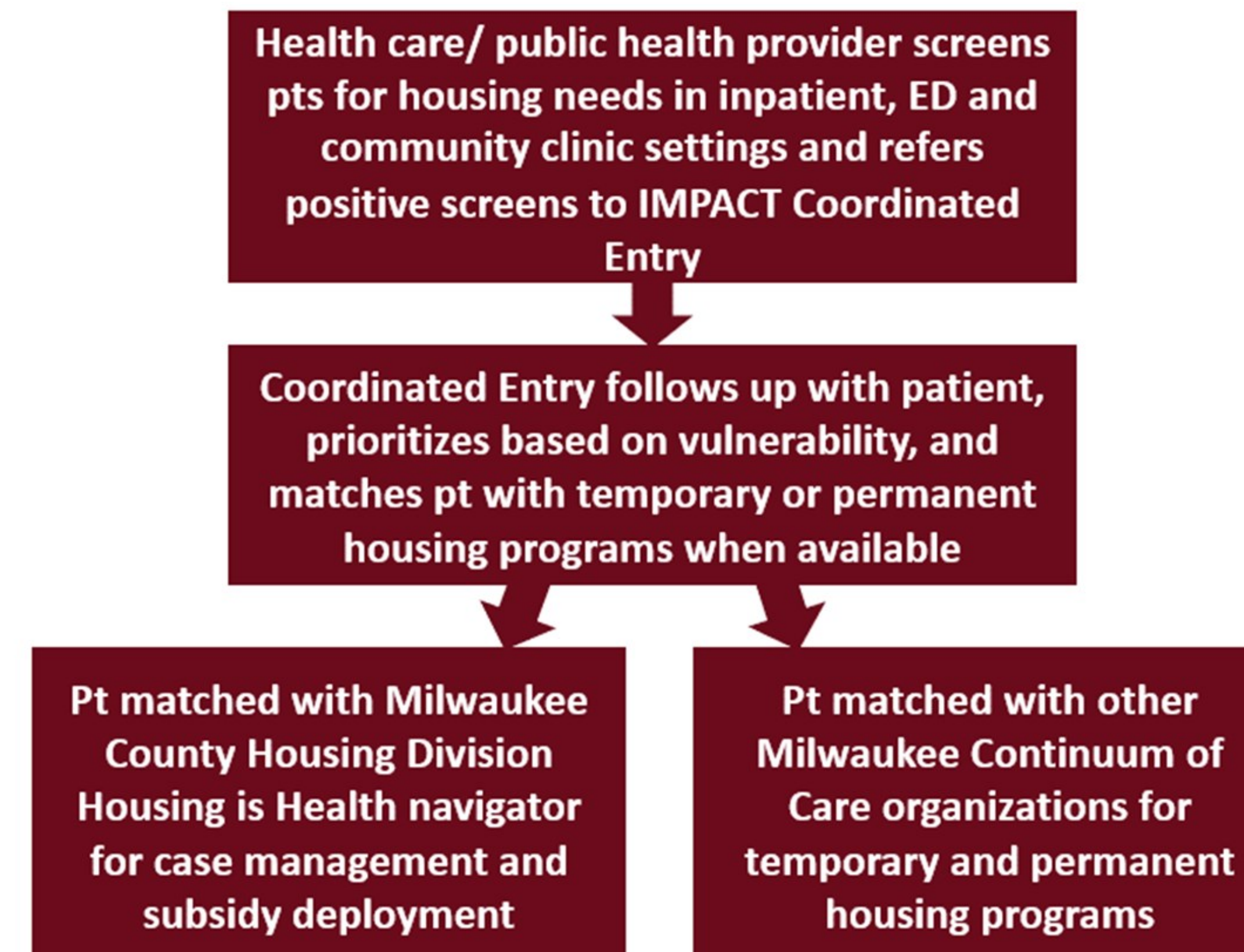
## GOALS

Address patient's housing needs to improve health outcomes and reduce ED visits, inpatient length of stays, and readmissions.

## TARGET POPULATION

- Current inpatient, observation or ED patients
- Primary care patients at select safety-net clinics
- Individuals who meet the HUD definition of "literally homeless" or are "at imminent risk of homelessness"
- Patients who are frequent ED users, at risk of readmission, or at risk of excess length of stay due to homelessness are also prioritized

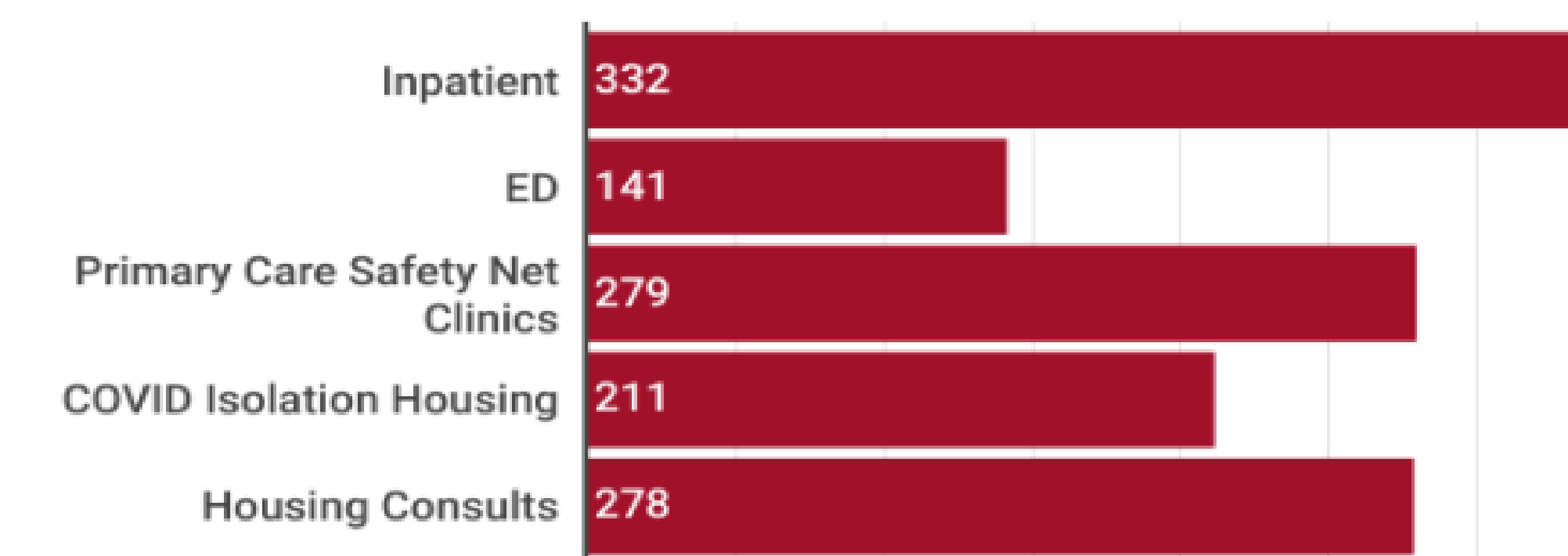
## REFERRAL PROCESS



## OUTCOMES

**1,483 TOTAL REFERRALS 2019-2022**

Housing is Health Referrals, 2019-2022



## PARTICIPATING MEMBERS

### Housing Navigation Partners

- Milwaukee County Housing Services
- IMPACT Coordinated Entry

### Health Systems/Hospitals

- Ascension Wisconsin
- Aurora Health Care
- Children's Wisconsin
- Froedtert & the Medical College of Wisconsin

### Safety Net Clinics

- Bread of Healing
- Children's Midtown Clinic
- Gerald Ignace Indian Health Center
- Milwaukee Health Services, Inc.
- Outreach Community Health Center
- Progressive Community Health Centers
- Sixteenth Street Community Health Centers



**262**  
 Permanent housing placements since 2019

Housing is Health Permanent Housing Program Placements, CY 2022

