

OVERVIEW

Community Health Centers, known as Federally Qualified Health Centers (FQHCs), are integral to the fabric of Milwaukee's health care delivery system. FQHCs:

- Provide comprehensive and culturally-appropriate primary care, oral, mental health, and substance use disorder services regardless of patients' ability to pay or health insurance status
- Offer a sliding fee scale to persons with incomes below 200% FPL
- Have patient majority Boards
- Are embedded in the low-income and historically marginalized communities they serve

PURPOSE

MHCP's FQHC Capacity Building work seeks to strengthen the five FQHCs in Milwaukee by identifying areas for improvements, including through operational effectiveness, program service enhancements, opportunities for shared services, and collaboration with other organizations across the health care sector.

SHARED ACTIVITIES

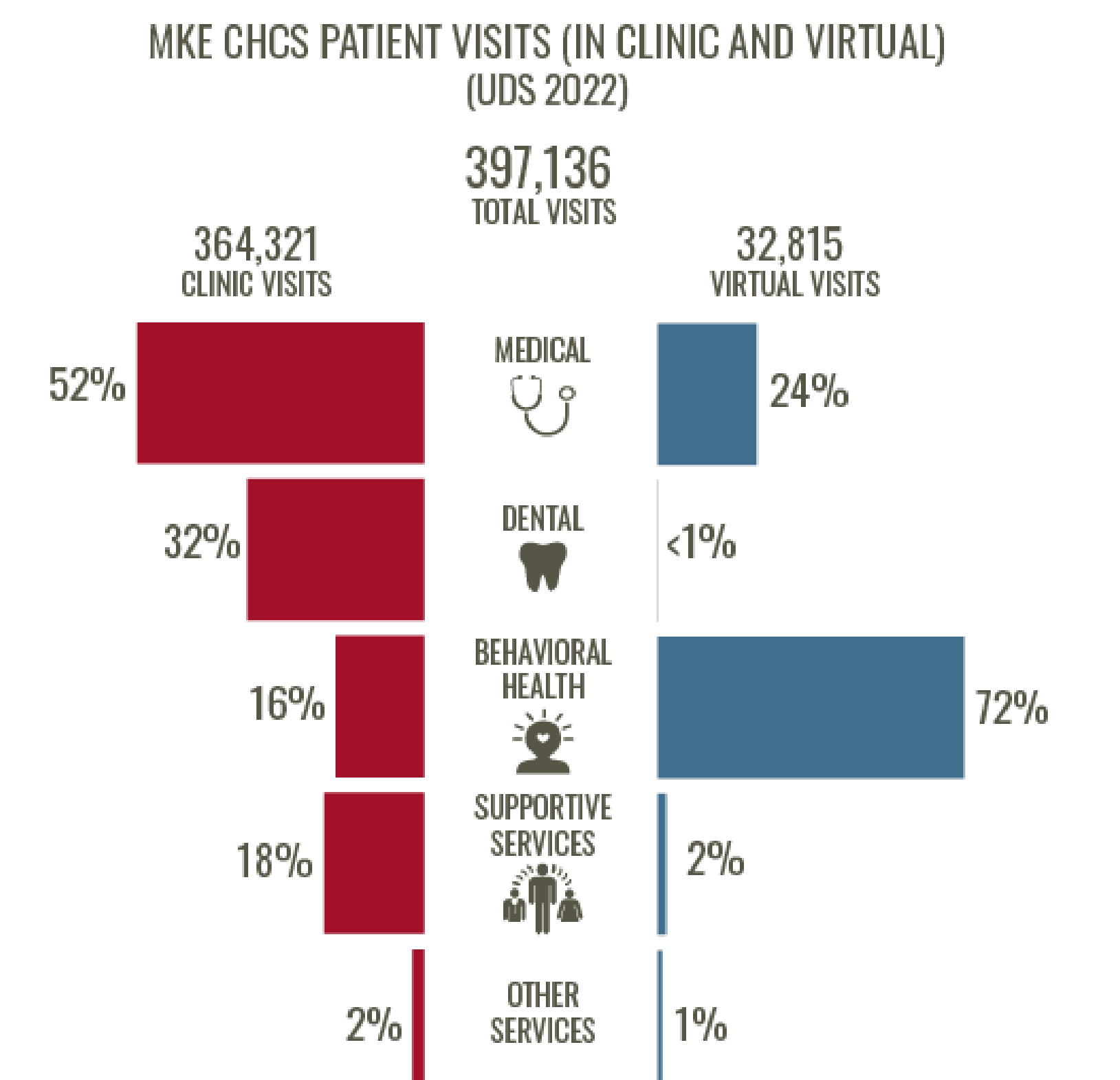
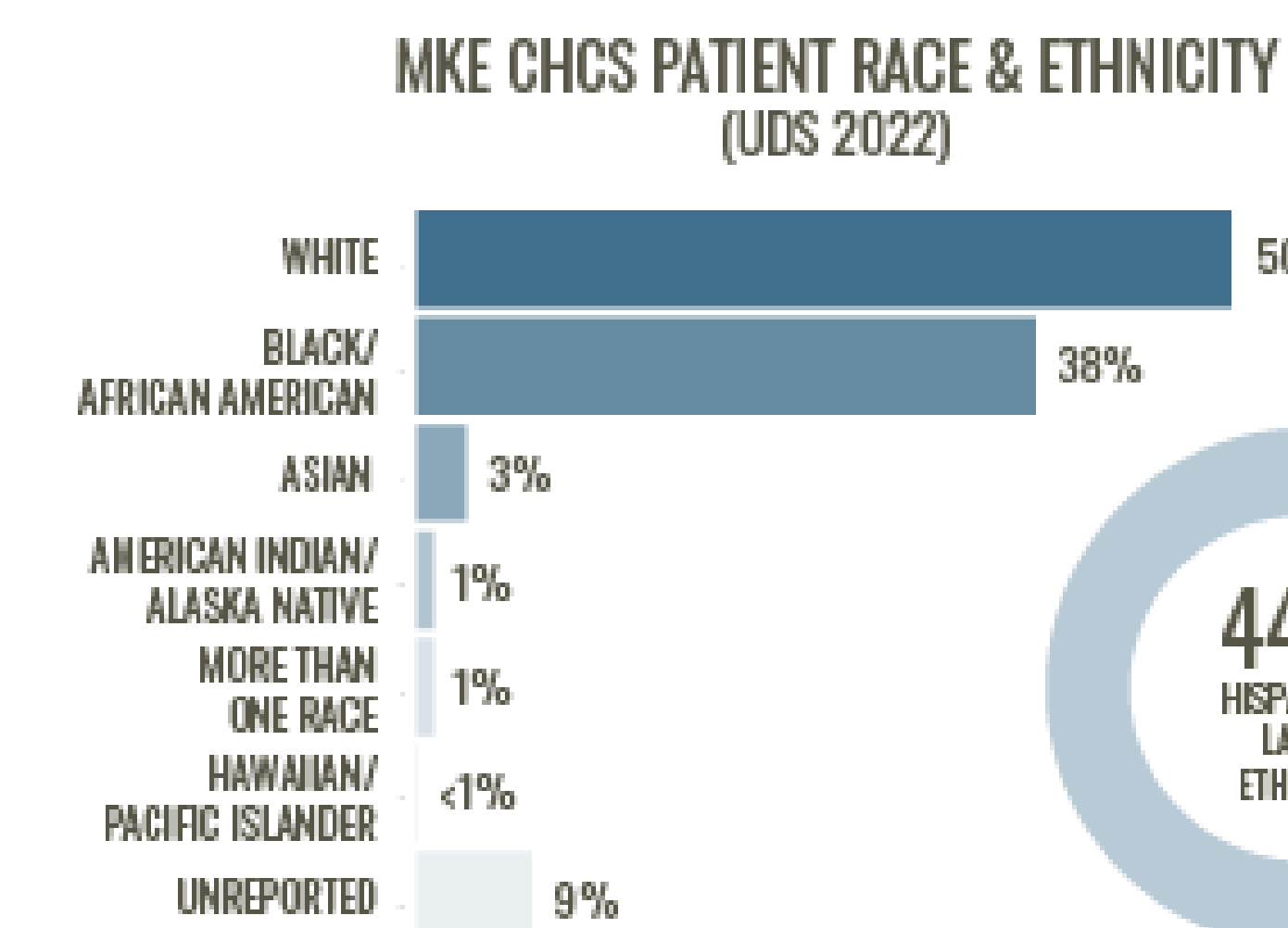
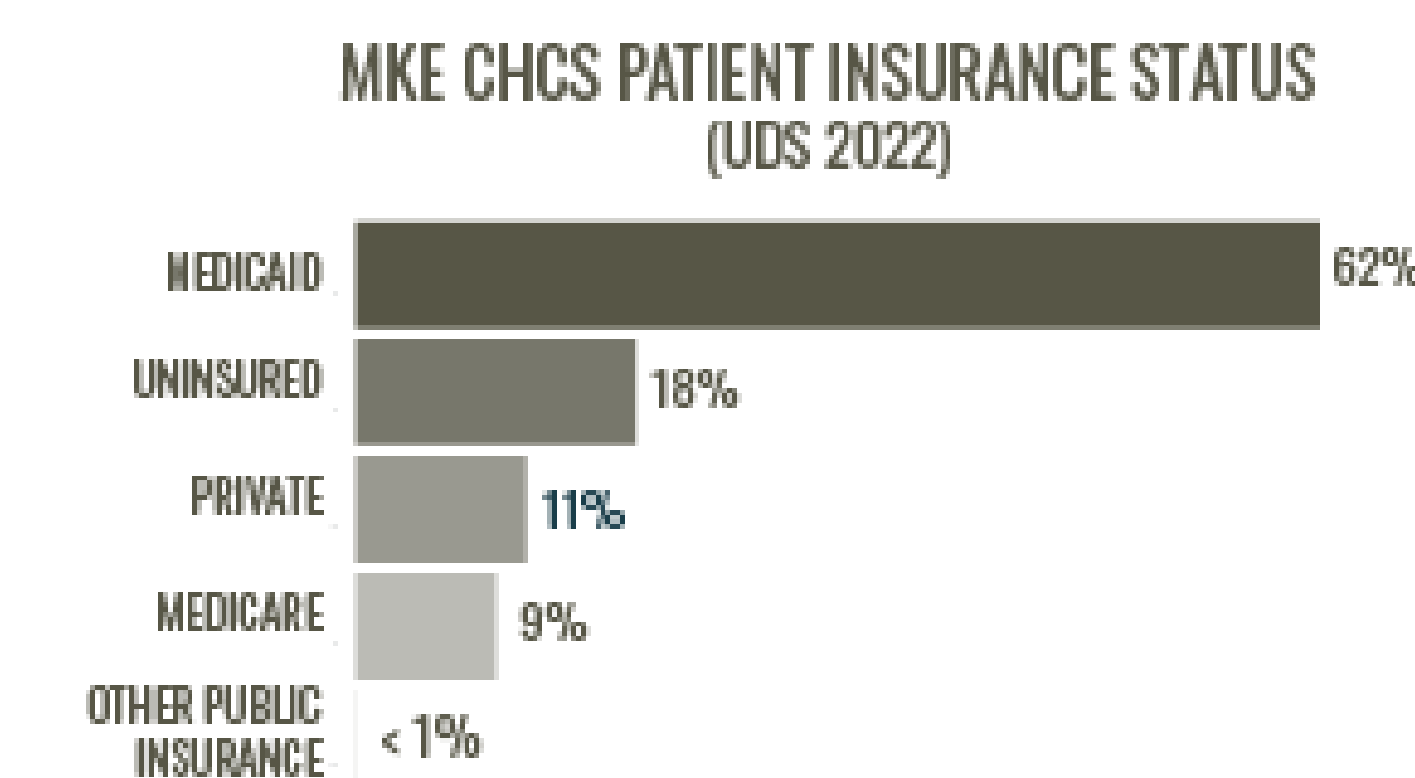
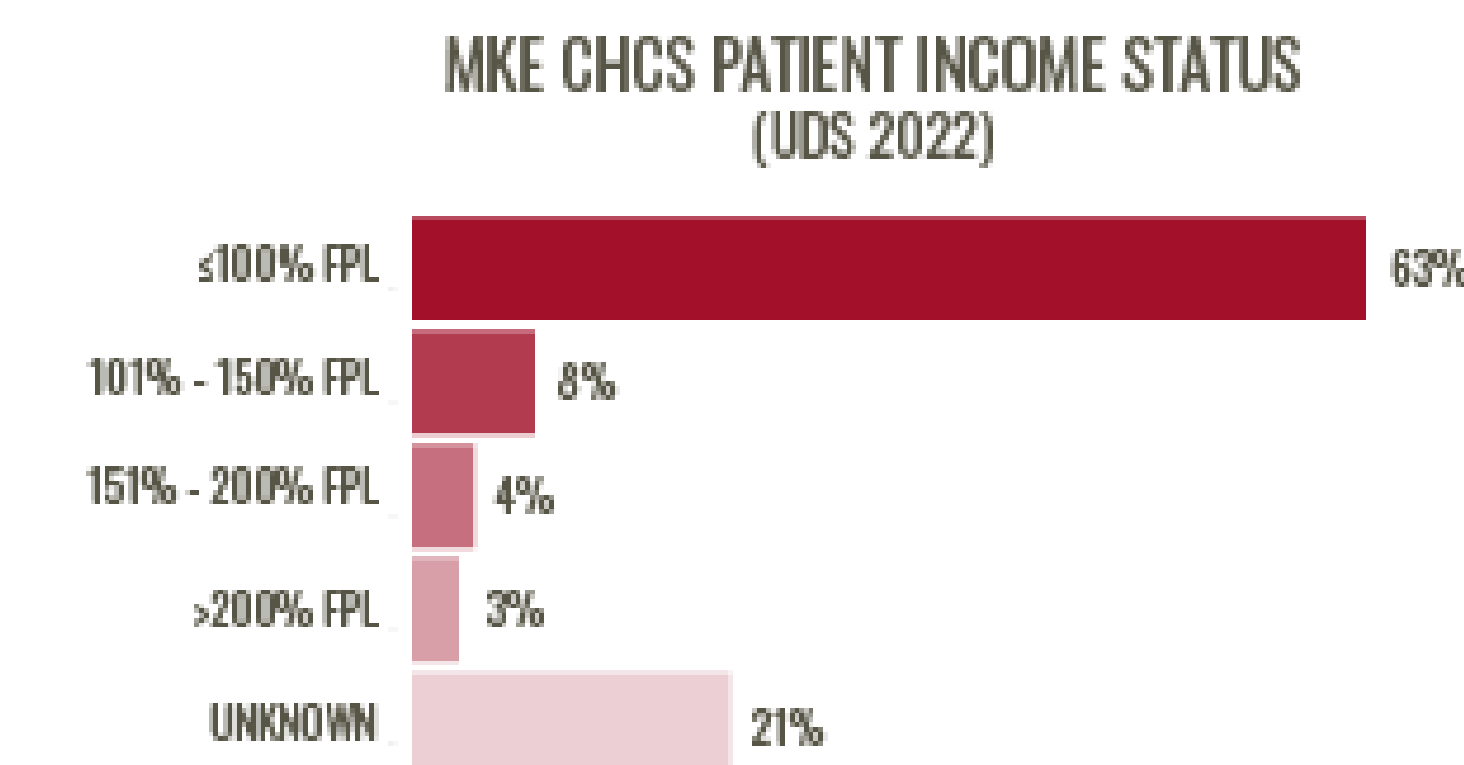
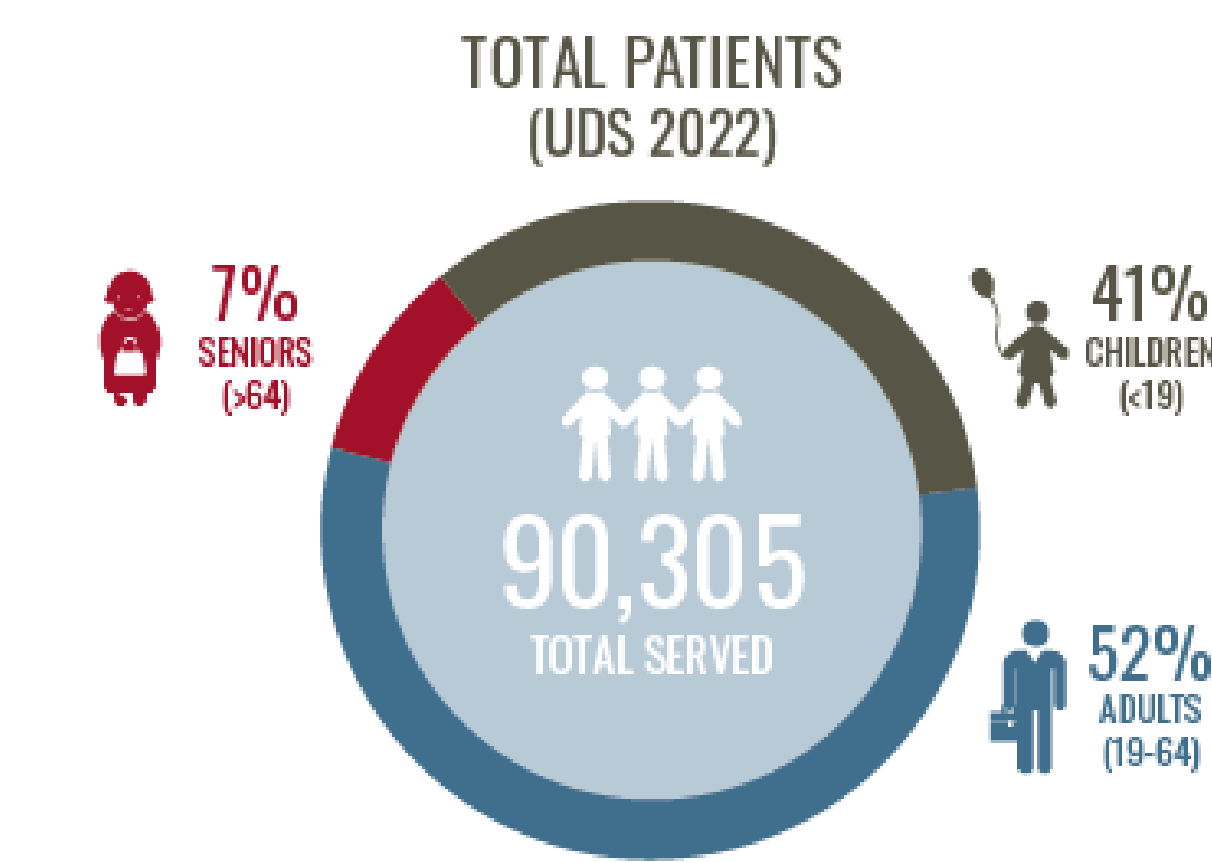
- Sharing best practices for continual quality improvement
- Optimizing OCHIN Epic to improve clinical decision making and outcomes, care management, and operational efficiencies
- Providing health insurance outreach and enrollment assistance to patients and community members
- Providing timely access to specialty care for uninsured via the MHCP SAUP program
- Securing housing navigation for patients via MHCP Housing is Health Program
- Receiving patient care referrals via MHCP Connect to Care Program

OUTCOMES

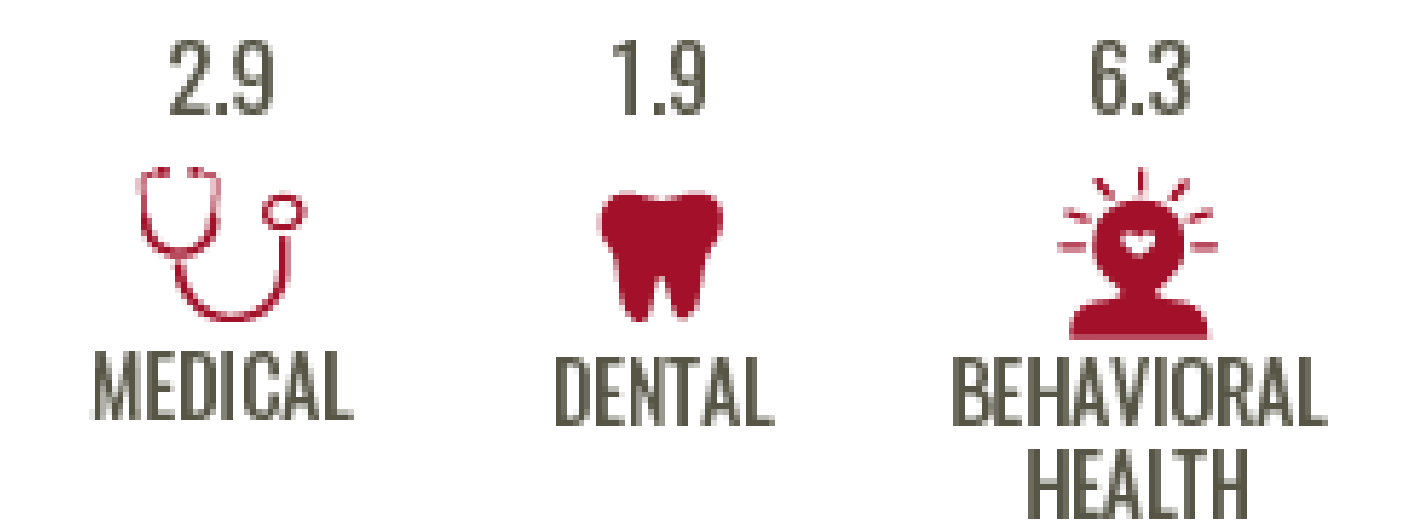
ANNUAL QUALITY METRICS
(WEIGHTED AVERAGE, UDS 2022)

MEASURE	%		2021 UDS NATIONAL AVERAGE
Entry into Prenatal Care	77.3%	≥	74.1%
Controlled Diabetes	71.8%	≥	67.7%
Controlled Hypertension	61.8%	≥	60.2%
Colorectal Cancer Screening	46.0%	≥	41.9%

PATIENT DEMOGRAPHICS | SERVICES



AVERAGE ENCOUNTERS/PATIENT (UDS 2022)



MKE CHCS SPECIAL POPULATIONS (UDS 2022)

