

MILWAUKEE HEALTH CARE



PARTNERSHIP

Milwaukee Health Care Partnership

2022 COMMUNITY IMPACT BUS TOUR

STOP #1

Mental Health Emergency Center









A man in a dark blue checkered suit jacket, light blue shirt, and glasses is wearing a light blue surgical mask. He is looking towards the center of the group.

A man in a white dress shirt and dark trousers is wearing a black face mask. He is looking down and to the right.

A woman with blonde hair, wearing a light blue surgical mask and a name tag that reads "Catie Kiloran", is wearing a sleeveless, vertically striped dress. She is looking towards the man in the suit.

A woman with blonde hair, seen from the back, is wearing a dark blue sleeveless top. She has a checkered handbag with a tan strap.

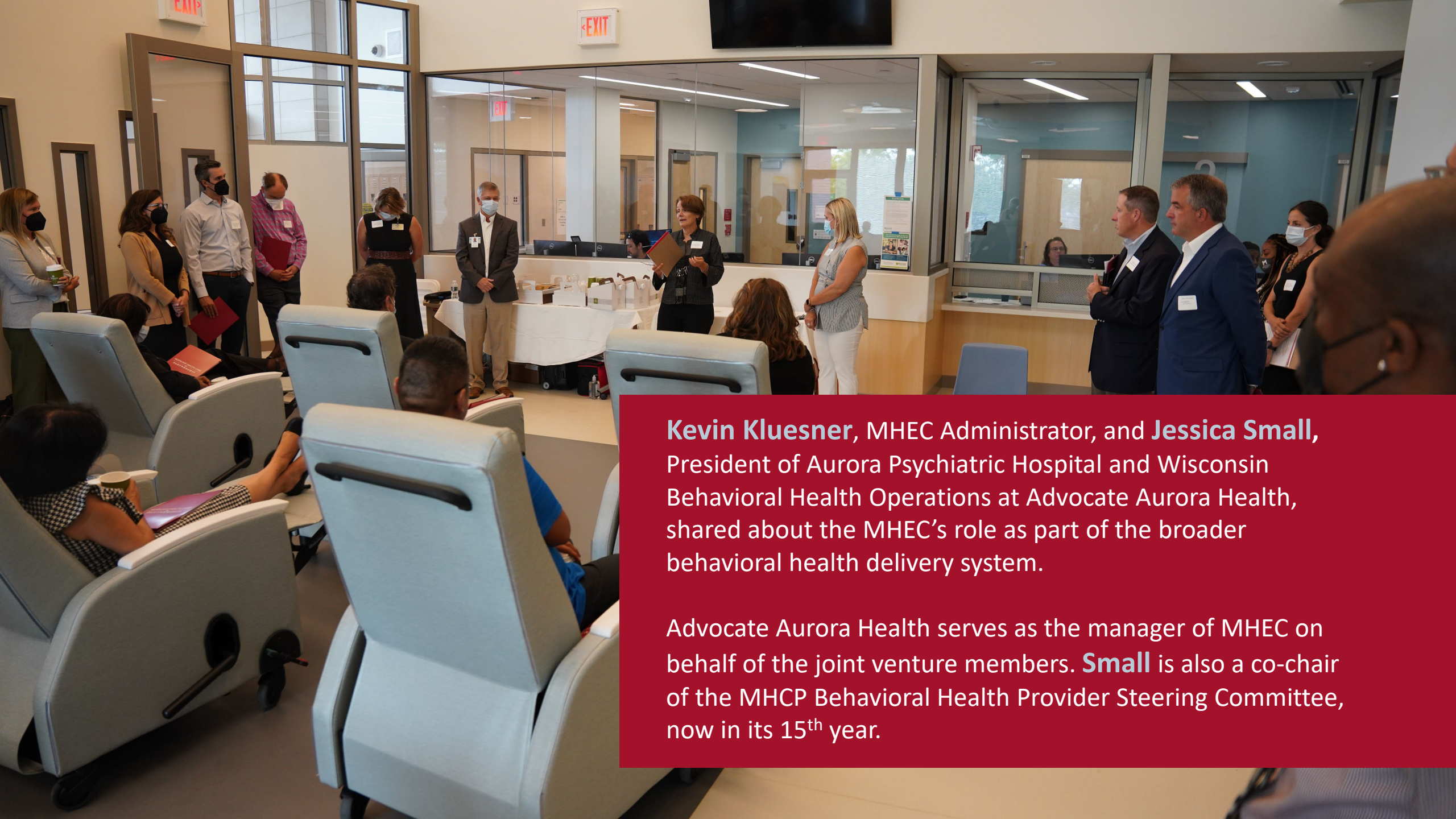
A woman with reddish-brown hair, wearing a light blue surgical mask and a name tag that reads "Jessica Small", is wearing a black sleeveless dress with a wide, braided brown belt. She is looking towards the group.





Nick
Ingha
MD

Ben Weston, MD
Medical College of
Wisconsin



Kevin Kluesner, MHEC Administrator, and **Jessica Small**, President of Aurora Psychiatric Hospital and Wisconsin Behavioral Health Operations at Advocate Aurora Health, shared about the MHEC's role as part of the broader behavioral health delivery system.

Advocate Aurora Health serves as the manager of MHEC on behalf of the joint venture members. **Small** is also a co-chair of the MHCP Behavioral Health Provider Steering Committee, now in its 15th year.



Milwaukee County Behavioral Health Services (BHS) leader, **Lauren Hubbard**, also provided an overview of the other critical community-based mental health and crisis services sponsored or supported by BHS.





MILWAUKEE HEALTH CARE
PARTNERSHIP

Bailey Murph
City of Milwaukee
Health Department



John McNamee
Children's Wisconsin



Scott Turner
Children's Wisconsin



Mike Gutzeit, MD
Children's Wisconsin











Kirsten Johnson
City of Milwaukee
Department

Bailey Murph
City of Milwaukee
Health Department

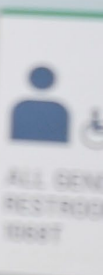






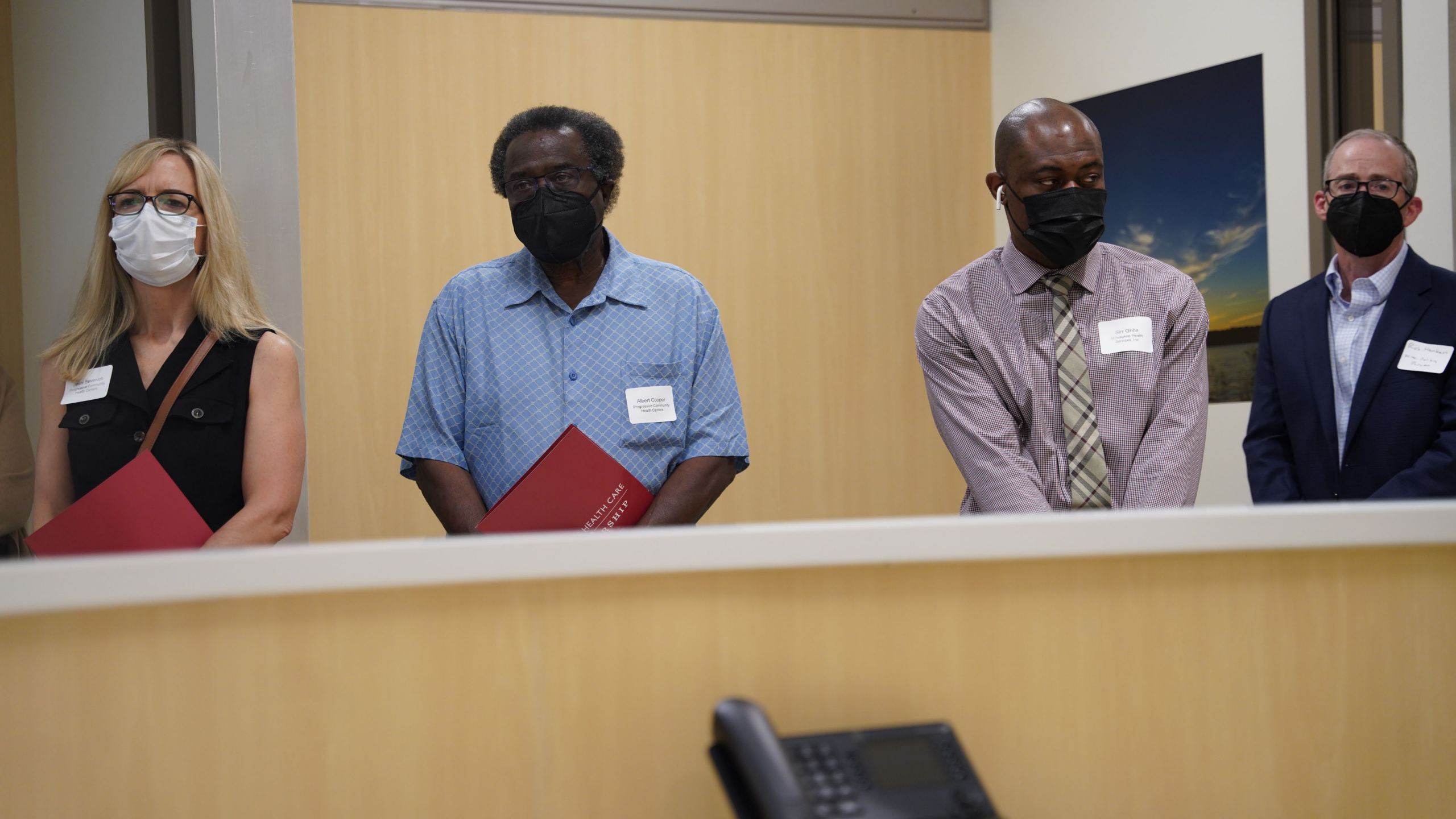
Tilo Izard, MD
Missouri Health
Services, Inc.











Janet Swanson
Executive Director
Health Centers

Albert Cooper
Progressive Community
Health Centers

Sir Grice
Universal Health
Services, Inc.

Chris Anderson
Senior Director
Health Centers

HEALTH CARE
PARTNERSHIP



Mark Huber
Advocate Aurora Health

Nan Gardetto
Advocate Aurora Health





STOP #2

Outreach Community Health Centers







Stephanie Harrison, CEO of the Wisconsin Primary Health Care Association, the state association for Wisconsin's 17 Federally Qualified Community Health Centers (FQHC), welcomed tour participants to Outreach Community Health Centers (OCHC) and provided a brief overview of the role FQHCs play in the Milwaukee delivery system.



Angela Sanders, Interim President and CEO at OCHC, and colleagues then shared more about the center's work as a health care for the homeless provider and as an essential provider of mental health and substance use disorder services. Sanders also highlighted OCHC's partnerships with Milwaukee County BHS to offer a new behavioral health walk-in clinic and with Ascension Wisconsin Seton Dental Clinic, who will provide mobile and on-site oral health services for patients.



American Heart Association

GET DO WITH YOUR BLOOD

1 GET IT

3 CU

Check

Visit: heart



Crystal Simpson, Manager of Behavioral Health Services,
Outreach Community Health Centers



**Ken Cole, Director of Outpatient Treatment Programs,
Milwaukee County Behavioral Health Services**



**Robert Ramirez, Director Community Clinic Operations,
Ascension Wisconsin**





Outreach
COMMUNITY HEALTH CENTERS

Outreach
COMMUNITY HEALTH CENTERS

Outreach
COMMUNITY HEALTH CENTERS

Outreach
COMMUNITY HEALTH CENTERS

Outreach
COMMUNITY HEALTH CENTERS

Outreach
COMMUNITY HEALTH CENTERS

Outreach
COMMUNITY HEALTH CENTERS

Outreach
COMMUNITY HEALTH CENTERS

Outreach
COMMUNITY HEALTH CENTERS

Outreach
COMMUNITY HEALTH CENTERS

Outreach
COMMUNITY HEALTH CENTERS

Outreach
COMMUNITY HEALTH CENTERS

Outreach
COMMUNITY HEALTH CENTERS

Outreach
Cynthia S.



Outreach
COMMUNITY HEALTH CENTERS

Outreach
COMMUNITY HEALTH CENTERS

Outreach
COMMUNITY HEALTH CENTERS



Outreach
COMMUNITY HEALTH CENTERS

Outreach
COMMUNITY HEALTH CENTERS

Outreach
COMMUNITY HEALTH CENTERS

Outreach
COMMUNITY HEALTH CENTERS

Outreach
COMMUNITY HEALTH CENTERS



RITEWAY BUS SERVICE, INC.
OAK CREEK, WI USDOT 0048553

BATTERY DISCONNECT
EMERGENCY USE ONLY

Eric Carney
Executive Director



RITEWAY BUS SERVICE, INC.
OAK CREEK, WI USDOT 0048553

MILWAUKEE



BATTERY DISCONNECT
EMERGENCY USE ONLY

RITEWAY BUS SERVICE, INC.
OAK CREEK, WI USDOT 0048553

Employee ID badge

Employee ID badge

STOP #3

Sojourner Family Peace Center





♥ Welcome!
WIFI: ...
Sojourner

David Muhammad
Milwaukee County Health
and Human Services

Shakita LaGrant
Milwaukee County Health
and Human Services





Kirsten Johnson
City of Milwaukee Health
Department

Ben Weston, MD
Medical College of
Wisconsin



Albert Cooper
Progressive Community
Health Centers

Danny Murph
City of Albuquerque
Health Department



Lisa Olson
Wisconsin Department of
Health Services



Jeff
Huebner
WI Medicaid





Sherrin
Horn
RN

Sherrin
Horn

MILWAUKEE CARE PARTNERSHIP



Key leaders elevated the important role health care providers play in violence prevention and the four violence intervention initiatives underway across MHCP member organizations.



Maurice James
General Manager
Indian Health Center

John Keener
Chicago
Milwaukee

Reggie Newton
Assistant Director

Scott Turner
Director of Operations

MILWAUKEE HEALTH CARE
PARTNERSHIP





Tristan Gross, Director of Partnerships and
Community Engagement, Sojourner Family Peace
Center



Kerry Freiberg
Vice President
Community Engagement
Froedtert

Kerry Freiberg
Froedtert Health

Carrie Killoran
Administration
Aurora Health Care



- Co-located (15)- Partners who have physical space and executed co-location agreements.
- Visiting (31)- Partners not co-located in the FPC who provide services to clients onsite.
- Referring- Partners with whom the FPC has a developed referral relationship.





Sharain Anderson, Vice President, Well Community, Advocate Aurora Health and Co-chair of the MHCP Forensic Nursing Network



Reggie Moore, Director of Violence Prevention Policy and Engagement, MCW Comprehensive Injury Center





A reminder that every abusive relationship has a way out.

SOJOURNER
CALL 414.933.2222
TEXT 414.877.8100



Bridget Clementi, Vice President Community Health, Children's Wisconsin

DRIVE-BY:

- **Milwaukee Health Services, Inc.**
- **Progressive Community Health Centers**
- **ThriveOn Collaboration**







Kristen Johnson
City of Milwaukee
Department of...

Darcy Igo
MCW

[Name tag]

[Name tag]





Justin Rivers
Michigan Health Care
Partnership

Linda Stewart
Michigan Health Care
Partnership

Linda Stewart
Michigan Health Care
Partnership

Joy Taylor
Michigan Health Care
Partnership

MILWAUKEE HEALTH CARE

PARTNERSHIP