

Coverage Report

January 2018



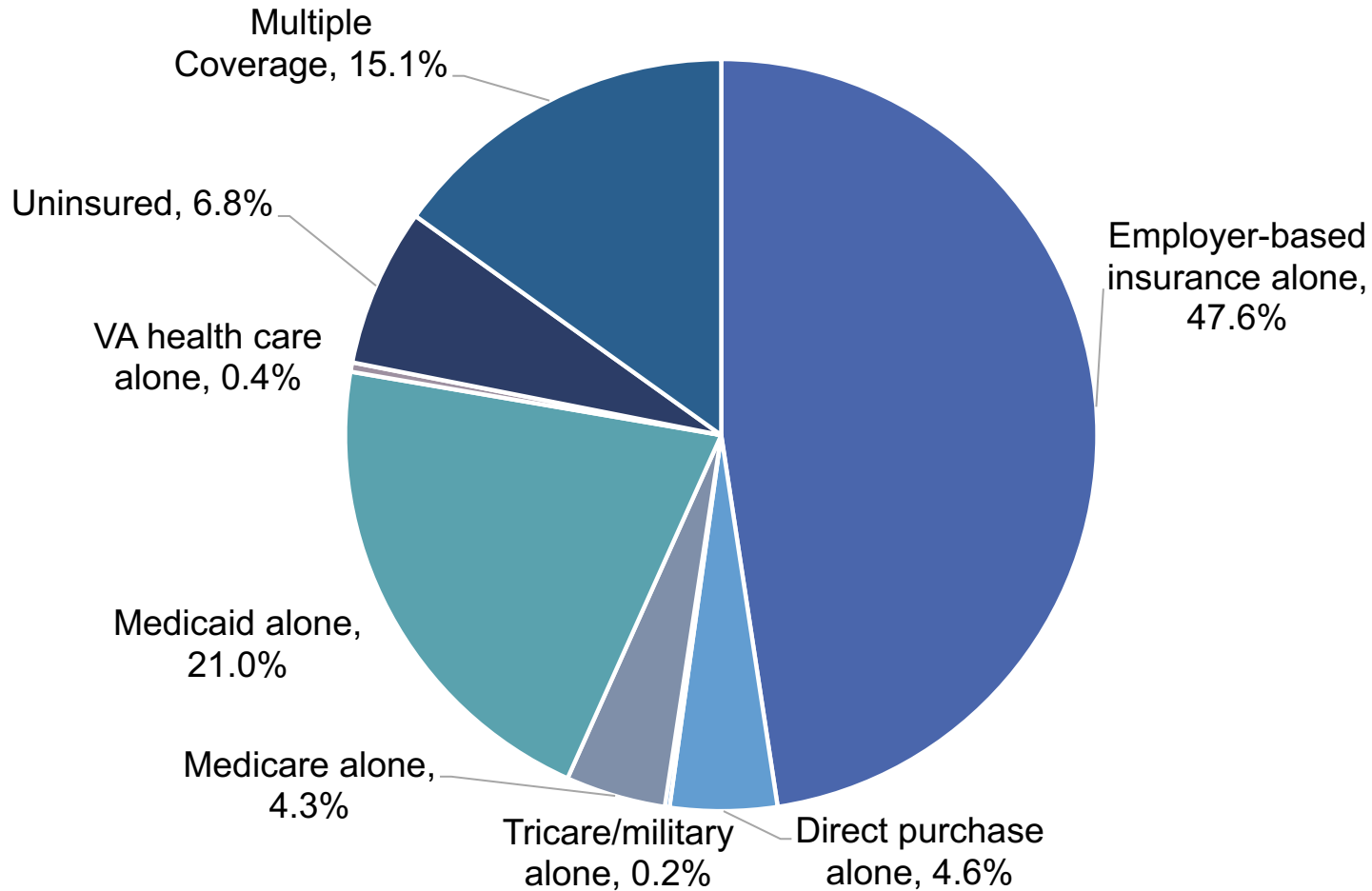
Data prepared by the University of Wisconsin Population Health Institute

Highlights *October – December 2017*

- About a third of Milwaukee County residents (32.9%), and half of all children (46.3%), are enrolled in a Medicaid program.
- BadgerCare Plus child enrollment had an increase since September 2017.
- BadgerCare Plus Childless Adult coverage is down since its peak in March 2015 with 56,690 childless adults enrolled. As of December 2017, 48,329 childless adults are enrolled in BadgerCare Plus in Milwaukee County. This enrollment is up since September 2017.
- Approximately 6.8% of the Milwaukee County population are uninsured representing approximately 63,338 people.
- Approximately 66% of the people who are uninsured are below 200% of the federal poverty level; 45% of whom are below 138% of the federal poverty level.
- 70% of people who are uninsured in Milwaukee County are employed

Sources of Health Insurance

Milwaukee County



Multiple coverage = any combination of more than one coverage type, including Medicaid w/Medicare

Medicaid / BadgerCare Enrollment

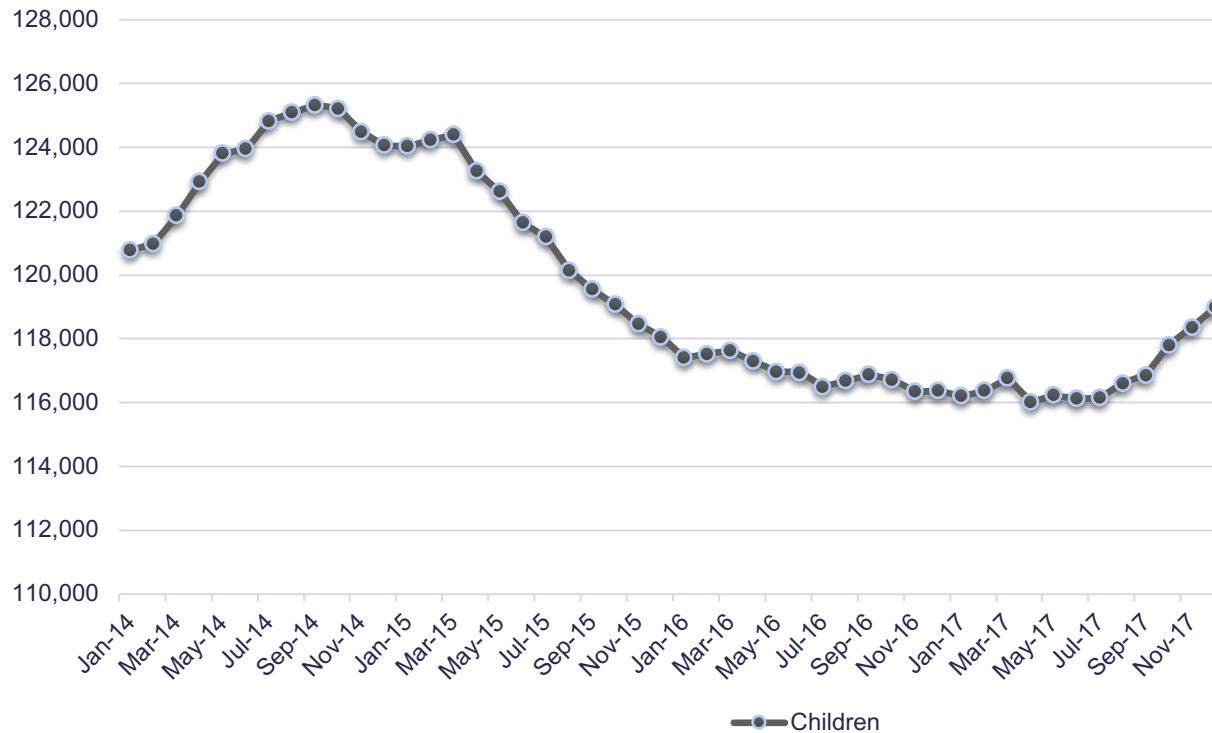
Milwaukee County, December 2017

	# Covered in Milwaukee County	% of Milwaukee County Population	# Covered in Wisconsin	% of State Population
BadgerCare Children	118,988	46.3% (of all children)	415,803	28.9% (of all children)
BadgerCare Parents and Caretakers	39,488	6.6% (of all adults)	139,960	4.1% (of all adults)
BadgerCare Childless Adults	48,329	8.1% (of all adults)	147,766	4.3% (of all adults)
Other BadgerCare – Pregnant Women, Youths Existing Foster Care, Income Extensions, Express Enroll	23,324		80,061	
Total BadgerCare	230,129	24.2%	783,590	13.5%
Elderly/Blind/Disabled	66,632		222,612	
Other Coverage	16,471		178,651	
Total Medicaid	313,232	32.9%	1,184,853	20.5%

Medicaid / BadgerCare Trends

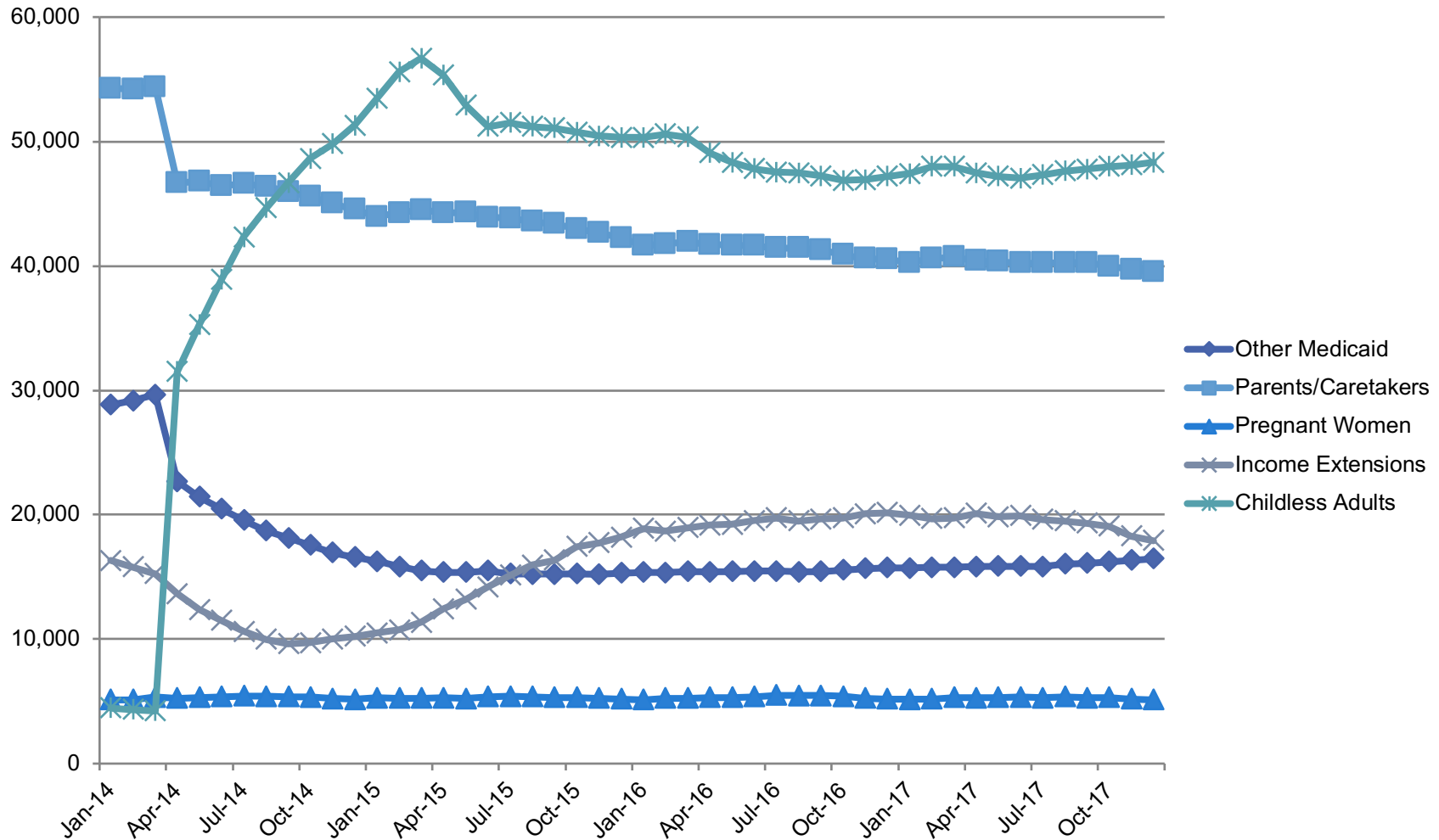
Milwaukee County, March 2014 to December 2017

Children



Medicaid / BadgerCare Trends

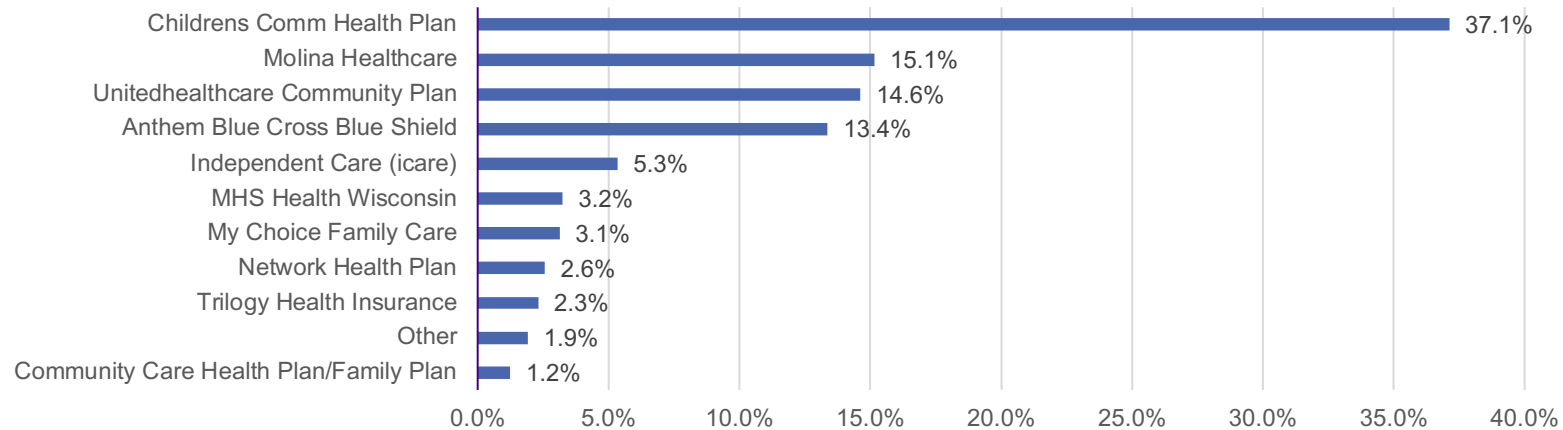
Milwaukee County, March 2014 to December 2017



Medicaid HMO Enrollment

Milwaukee County, December 2017

Distribution of BadgerCare Plus Enrollment, December 2017

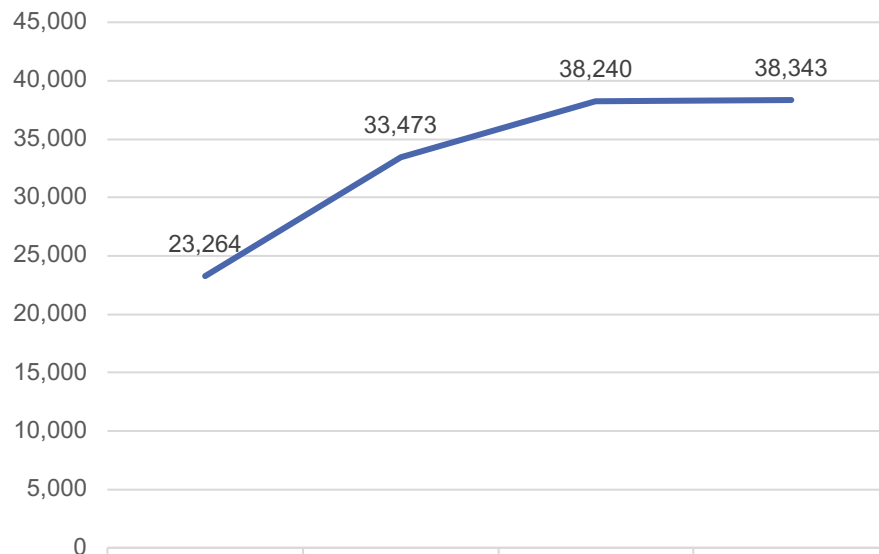


Dec-17	BadgerCare		SSI		Family Care		All	
	# enrolled	% of all BC	# enrolled	% of all SSI	# enrolled	% of all Family Care	Dec 2017 Total	% of enrollments
Anthem Blue Cross Blue Shield	31,783	15.0%	667	4.3%			32,450	13.4%
Community Care Health Plan/Family Plan					3,005	28.4%	3,005	1.2%
Childrens Comm Health Plan	90,153	42.5%					90,153	37.1%
Independent Care (icare)	7,705	3.6%	5,279	34.1%			12,984	5.3%
MHS Health Wisconsin	6,571	3.1%	1,291	8.3%			7,862	3.2%
Molina Healthcare	35,695	16.8%	1,087	7.0%			36,782	15.1%
My Choice Family Care					7,589	71.6%	7,589	3.1%
Network Health Plan	5,691	2.7%	548	3.5%			6,239	2.6%
Trilogy Health Insurance	5,625	2.7%					5,625	2.3%
Unitedhealthcare Community Plan	28,917	13.6%	6,592	42.6%			35,509	14.6%
Other							4,665	1.9%
Total	212,140	100%	15,464	100%	10,594	100%	242,863	100%

Marketplace Enrollment

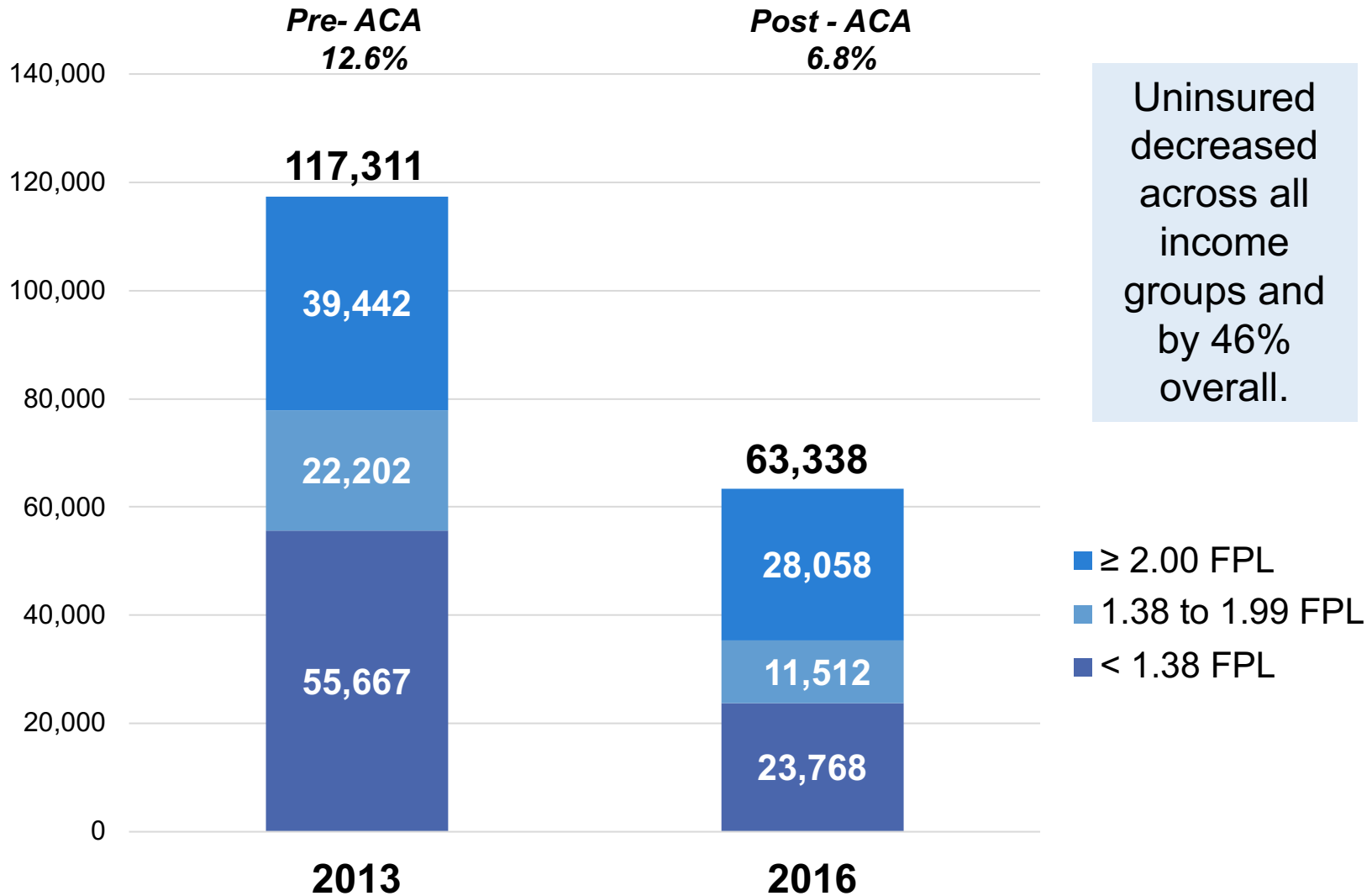
Milwaukee County, March 2017

	# OE* 2017-18 Plan Selections Milwaukee County	% of Population Milwaukee County	# OE* 2017-18 Plan Selections Wisconsin	% of Population Wisconsin
Total Qualified Health Plan Selections	Not yet available	Not yet available	225,435	6.4% of population ages 18-64



	OE 2013-14	OE 2014-15	OE 2015-16	OE 2016-17
QHP Selections	23,264	33,473	38,240	38,343

Uninsured in Milwaukee County



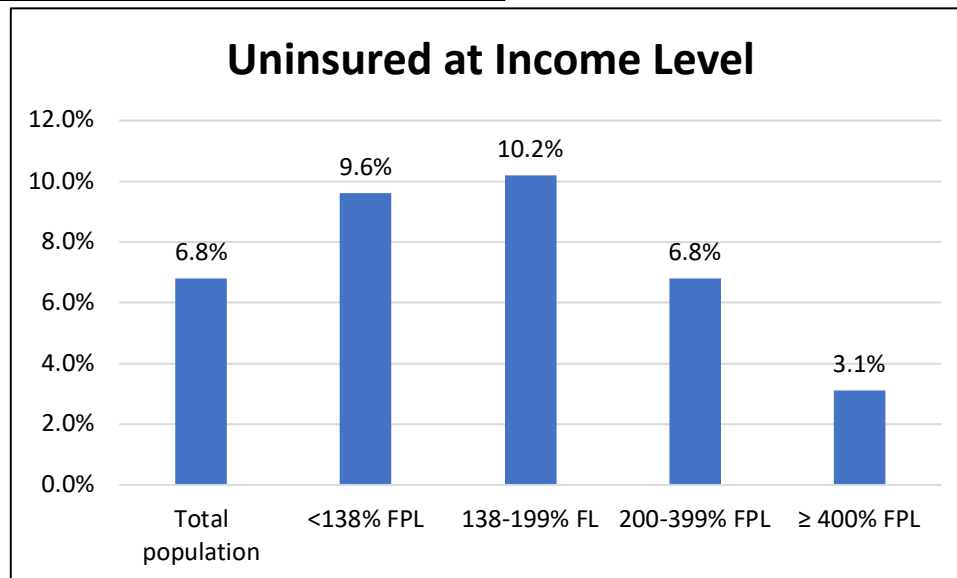
Source: U.S. Census, American Community Survey (ACS) 2013, 2016

Uninsured in Milwaukee County

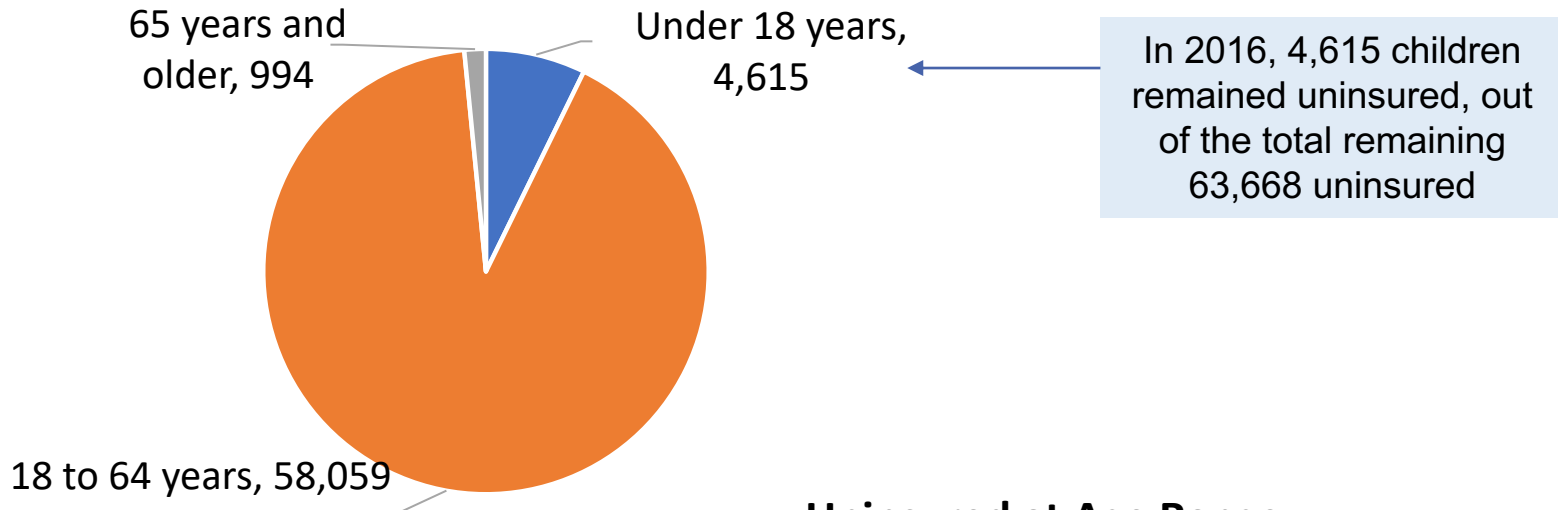
Uninsured Milwaukee County Residents for Whom Poverty Status is Determined

Detail 2015 Uninsured	Percent Uninsured in Each Income Category	Number of Uninsured	Percent of all Uninsured
<138% FPL	9.6%	23,768	45.3%
138-199% FPL	10.2%	11,512	21.3%
>200% FPL	4.9%	28,058	33.4%
Total Population	6.8%	63,338	100%

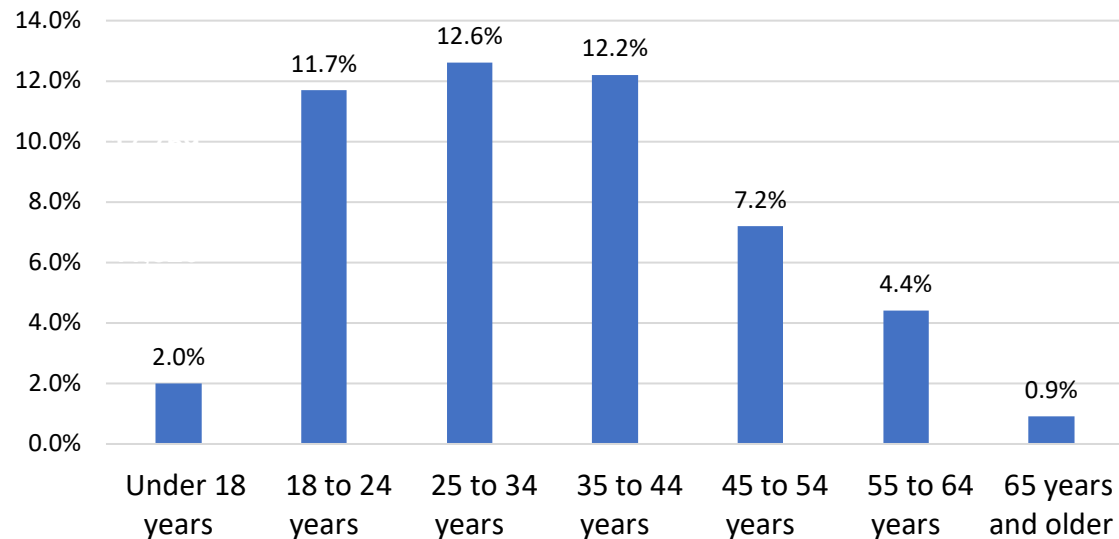
Persons below 200% FPL account for two-thirds of all uninsured in Milwaukee County and are most likely to be uninsured.



Uninsured in Milwaukee County

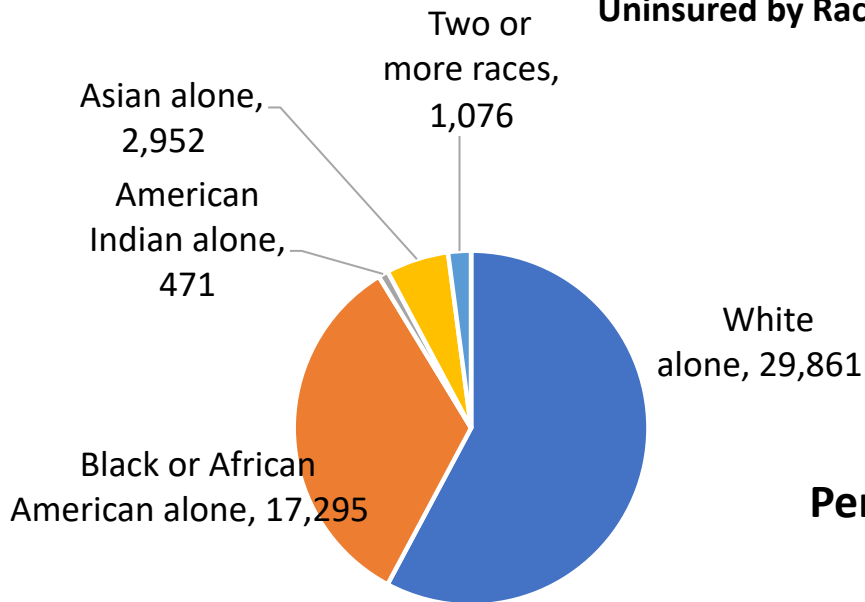


Uninsured at Age Range



Uninsured in Milwaukee County

Uninsured by Race, ACS 2016



Percentage of Uninsured who are employed

Uninsured <i>(non-institutionalized population)</i>	59,053
Employed Uninsured	41,207
<i>Uninsured who are employed</i>	70%

Percentage of Uninsured within each Race/Ethnicity

