

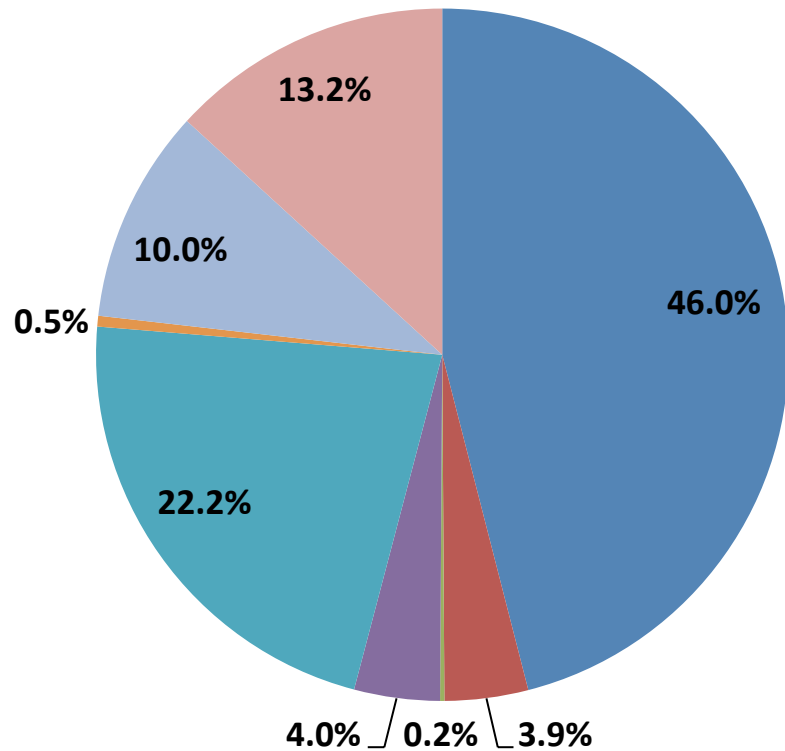
Health Insurance Coverage Dashboard August 2016



*Sponsored by the Milwaukee Health Care Partnership and Covering Wisconsin
Data prepared by the University of Wisconsin Population Health Institute*

Sources of Health Insurance

Milwaukee County



- Employment-based coverage alone
- Direct-purchase health insurance alone
- TRICARE/military coverage alone
- Medicare alone
- Medicaid alone
- VA alone
- Uninsured
- Multiple Coverage

Multiple coverage = any combination of more than one coverage type

Medicaid / BadgerCare Enrollment

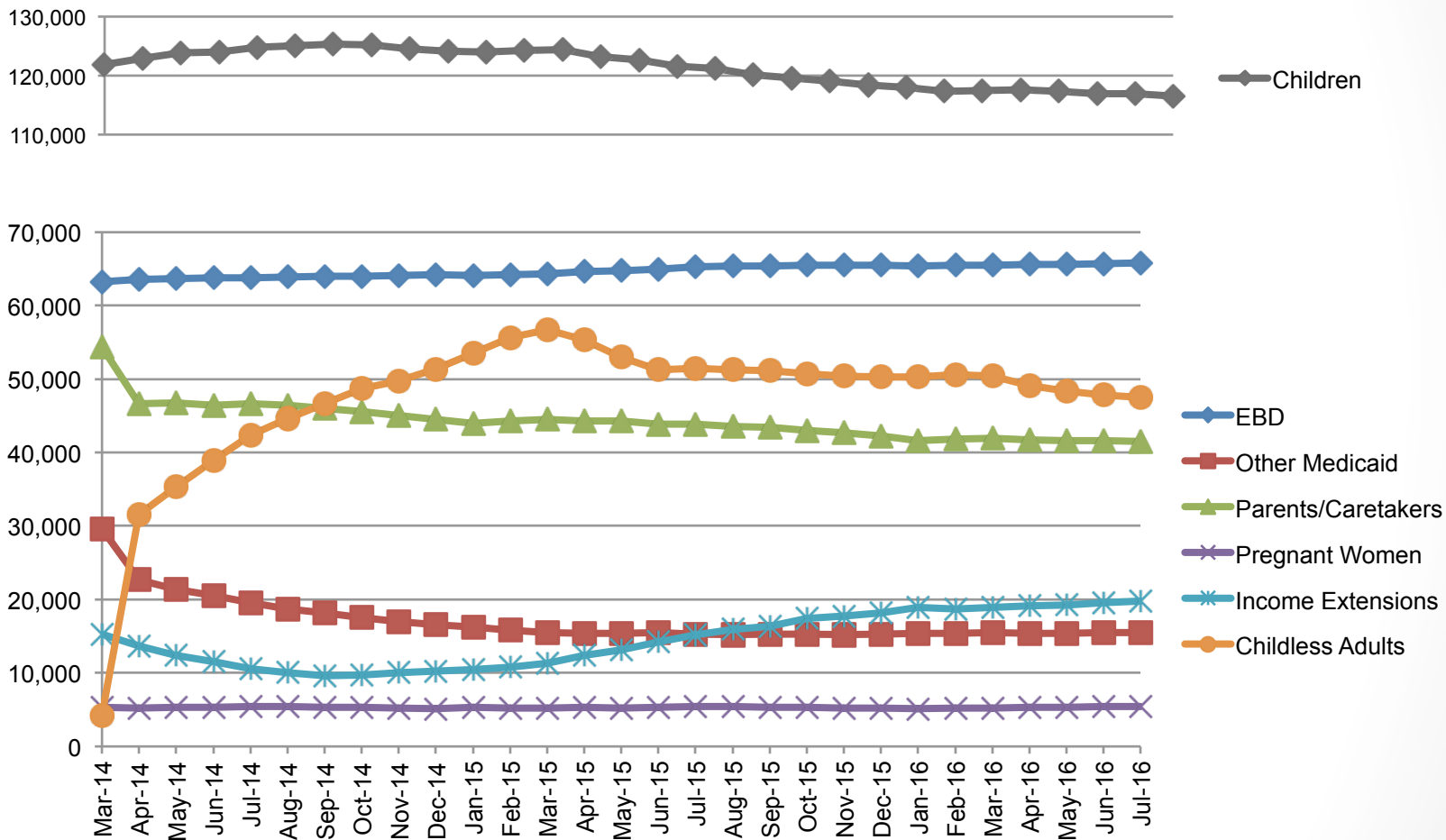
Milwaukee County, July 2016

	# Covered in Milwaukee County	% of Population Milwaukee County	# Covered in Wisconsin	% of Population Wisconsin
BadgerCare Children	116,505	49.9% of children	415,222	32% of children
BadgerCare Adults	88,9830	12.5% of adults	294,967	6.7% of adults
Other BadgerCare – <i>pregnant women, youth exiting foster care, income extensions, express enrollments</i>	25,503		88,231	
Total BadgerCare	230,991	24.4%	798,420	14%
Elderly / Blind /Disabled	65,746		219,474	
Total Medicaid	312,211	33%	1,192,450	20.9%

Medicaid/BadgerCare as of July 2016: <https://www.forwardhealth.wi.gov/WIPortal/Content/Member/caseloads/enrollment/enrollment.htm.spage>

Medicaid / BadgerCare Trends

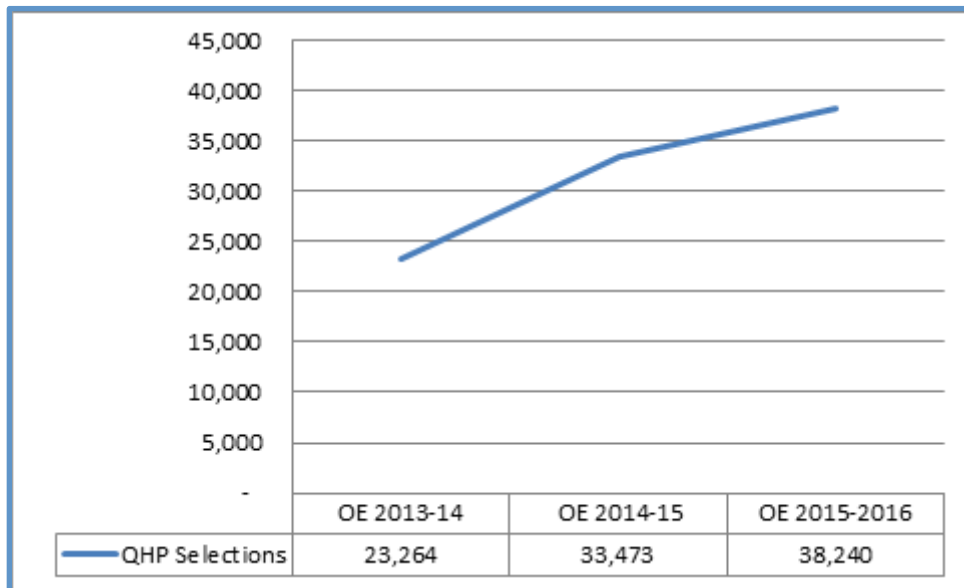
Milwaukee County, March 2014 to July 2016



Marketplace Enrollment

Milwaukee County, February 2016

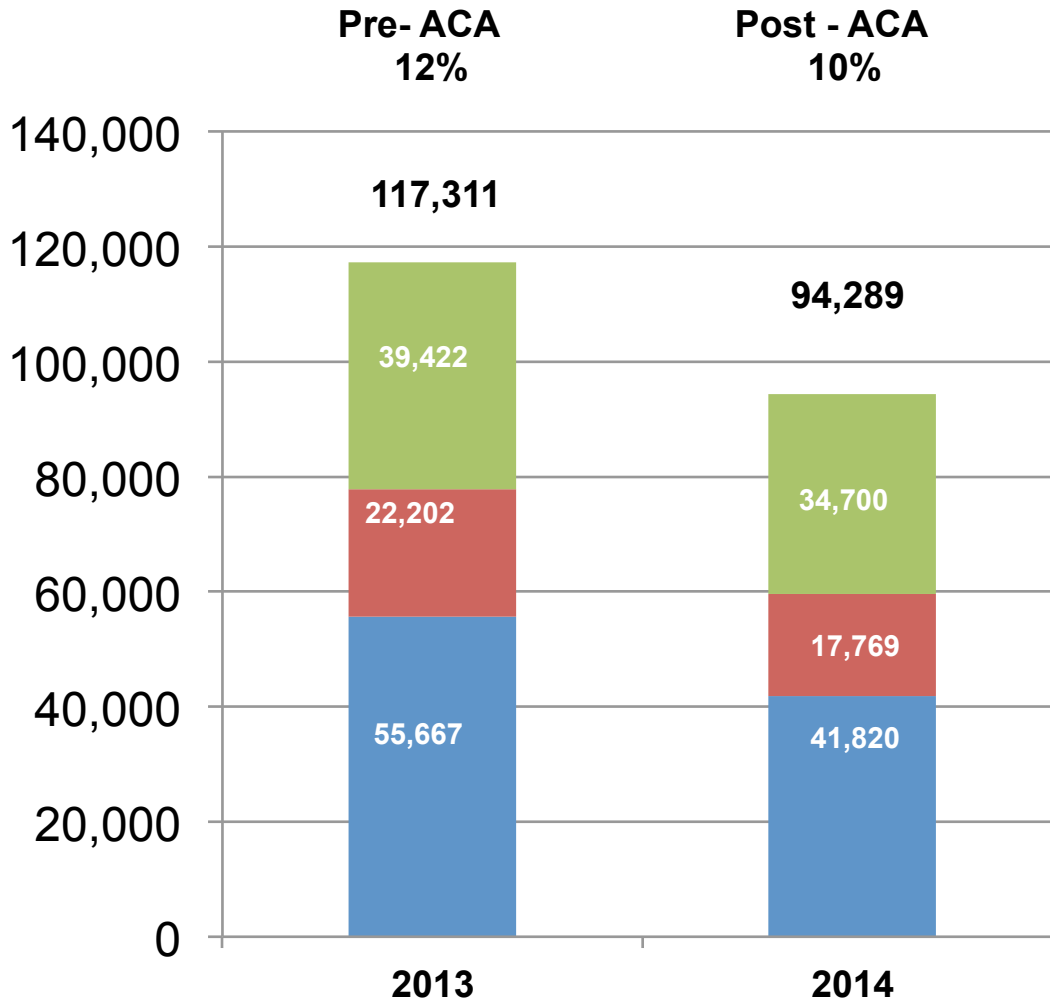
	# Covered in Milwaukee County	% of Population Milwaukee County	# Covered in Wisconsin	% of Population Wisconsin
Total Qualified Health Plan Selections	38,240	4.6% of population < age 65	239,031*	4.6% of population < age 65



QHP Selections as of Feb 2016:
<https://aspe.hhs.gov/basic-report/plan-selections-zip-code-and-county-health-insurance-marketplace-march-2016>

*Note: CMS reports that, as of March 31, 2016, a total of 224,208 Wisconsin residents effectuated enrollment, out of the 239,031 plans selected, meaning that they paid their first month's premium. This yields an effectuated enrollment rate statewide of 93%. **This report does not provide effectuated enrollment for Milwaukee County, as county level data have not been provided by CMS. However, it may be possible to apply that 93% figure to Milwaukee County as an estimate.** See CMS March 31, 2016 Effectuated Enrollment Snapshot: <https://www.cms.gov/Newsroom/MediaReleaseDatabase/Fact-sheets/2016-Fact-sheets-items/2016-06-30.html>

Uninsured in Milwaukee County



- Uninsured decreased across income groups, with largest decrease among those <138% FPL
- Those above 200% FPL account for over a third of all uninsured persons in Milwaukee County

- ≥ 2.00 FPL
- 1.38 to 1.99 FPL
- < 1.38 FPL