

Health Care Coverage Report April 2013

The Milwaukee Health Care Partnership (the Partnership) is a public/private consortium dedicated to improving health care coverage, access and care coordination for underserved populations in Milwaukee County with the goal of improving health outcomes, eliminating disparities and reducing the total cost of care. Securing and retaining insurance coverage is essential for ensuring access to quality care. One of the priorities of the Partnership is to **increase the availability of adequate and affordable health care insurance coverage for low income individuals**. This health care coverage report provides an overview of the status of health insurance coverage in Milwaukee for vulnerable populations.

Population

Source: 2011 American Community Survey

Milwaukee County

952,532

Total Milwaukee County Population

24.9% or **237,298** of the Milwaukee County Population is under 18.

City of Milwaukee

597,884

Total City of Milwaukee Population

66.7% or **158,340** of Milwaukee County children under 18 live in the City of Milwaukee.

Poverty

Source: 2009-2011 American Community Survey 3-Year Estimates; 2013 US Department of Health & Human Services

\$23,550 is the Federal Poverty Level (FPL) for a family of four.

Milwaukee County

21.4% or **197,839** of all residents and **32%** or **75,554** of children under the age of 18 live in poverty.

City of Milwaukee

29.1% or **168,396** of all residents and **43%** or **68,118** of children under the age of 18 live in poverty.

Unemployment

Source: Bureau of Labor Statistics, February 2013

8.4% or **66,365** is the unemployment rate for the Milwaukee Metropolitan Statistical Areas.

21% increase in the unemployment rate for the Milwaukee Metropolitan Statistical Areas since September 2012.

Coverage

Source: Wisconsin Department of Health Services, February 2013; American Community Survey 2011

30.8% or **294,589** of all Milwaukee County residents are enrolled in Medicaid, BadgerCare or other state healthcare programs.

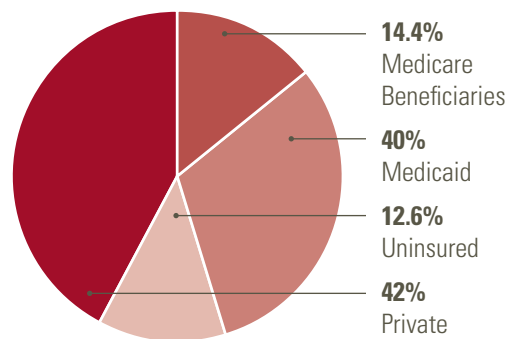
44% or **415,353** of Milwaukee County residents are vulnerable (a Medicaid enrollee or insured)

25.3% of all Wisconsin residents enrolled in statewide Medicaid program live in Milwaukee County.

16.7% of all Wisconsin residents live in Milwaukee County.

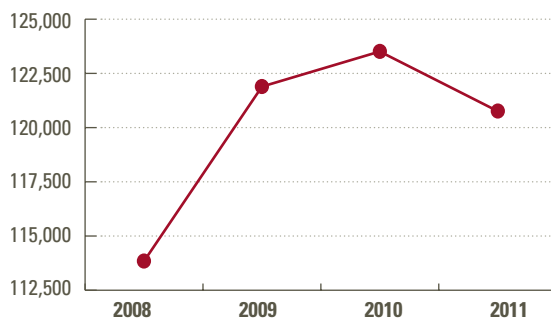
Coverage Status

Source: 2011 American Community Survey; 2013 Wisconsin Department of Health Services



Uninsured Population

Source: 2011 American Community Survey

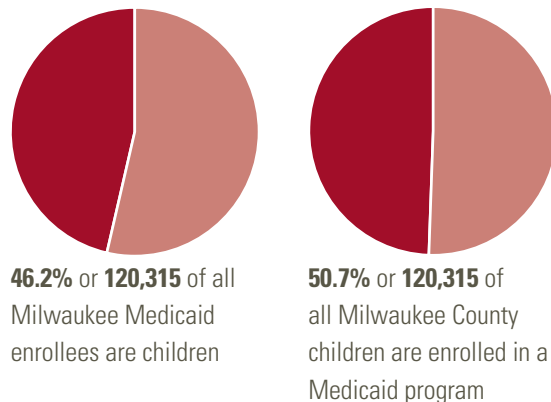


37.3% of uninsured residents live at or below the income requirement for Medicaid (200% of the FPL)

20.2% of uninsured residents are unemployed.

Medicaid Population by Age

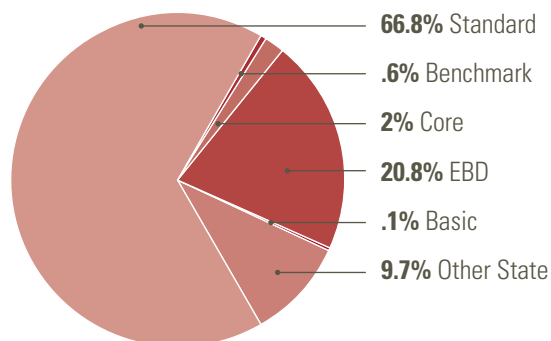
Source: 2011 American Community Survey



Health Care Coverage Report April 2013

Coverage by Program

Source: 2013 Wisconsin Department of Health Services



Milwaukee County Projected Badgercare and Marketplace Enrollment

Source: 2013 Wisconsin Department of Health Services

Badgercare Plus New Enrollees, January 2014

Assumed in Governor's Budget:

11,962

Badgercare Plus New Enrollees, June 2015

Assumed in Governor's Budget:

28,832

Marketplace Enrollment, January 2014

Assumed in Governor's Budget:

60,914

Marketplace Enrollment, June 2015

Assumed in Governor's Budget:

168,613

Transitioning Adults from Badgercare to Marketplace as of January 1, 2014

17,083

Medicaid Program Definitions

Standard: Families with income at or below 200% FPL

Benchmark: Families with income above 200% FPL

Core: Adults with no dependent children and income at or below 200% FPL

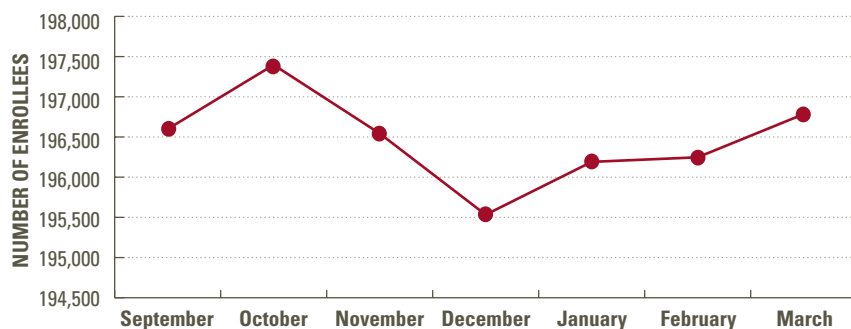
EBD: Individuals that are elderly, blind, or disabled

Basic: Individuals on Core Plan Wait List

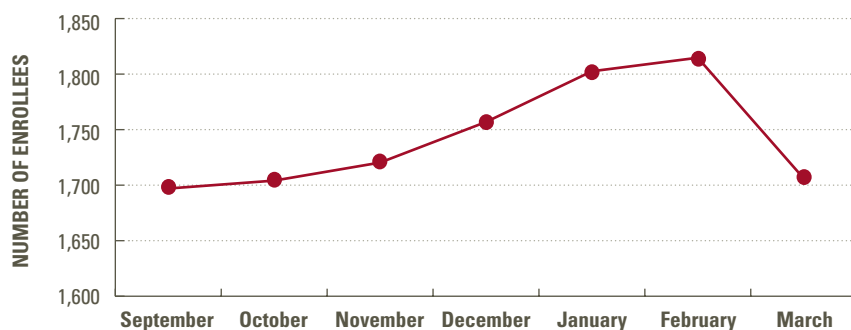
Milwaukee County Medicaid Enrollment by Program

Source: 2013 Wisconsin Department of Health Services

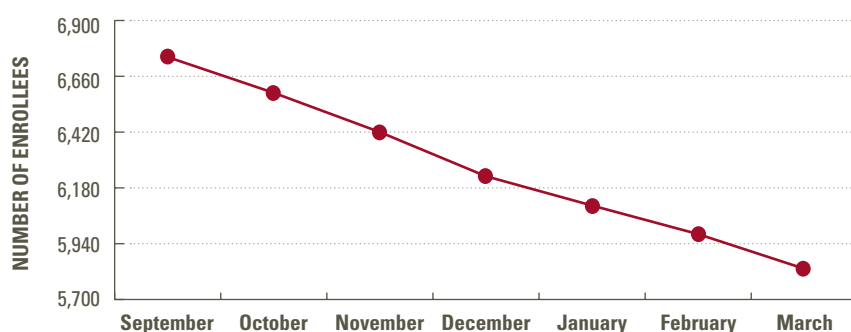
Medicaid Standard



Medicaid Benchmark



Medicaid Core



Medicaid EBD

